

WATERPROOFING MEMBRANE  
OVER PLYWOOD

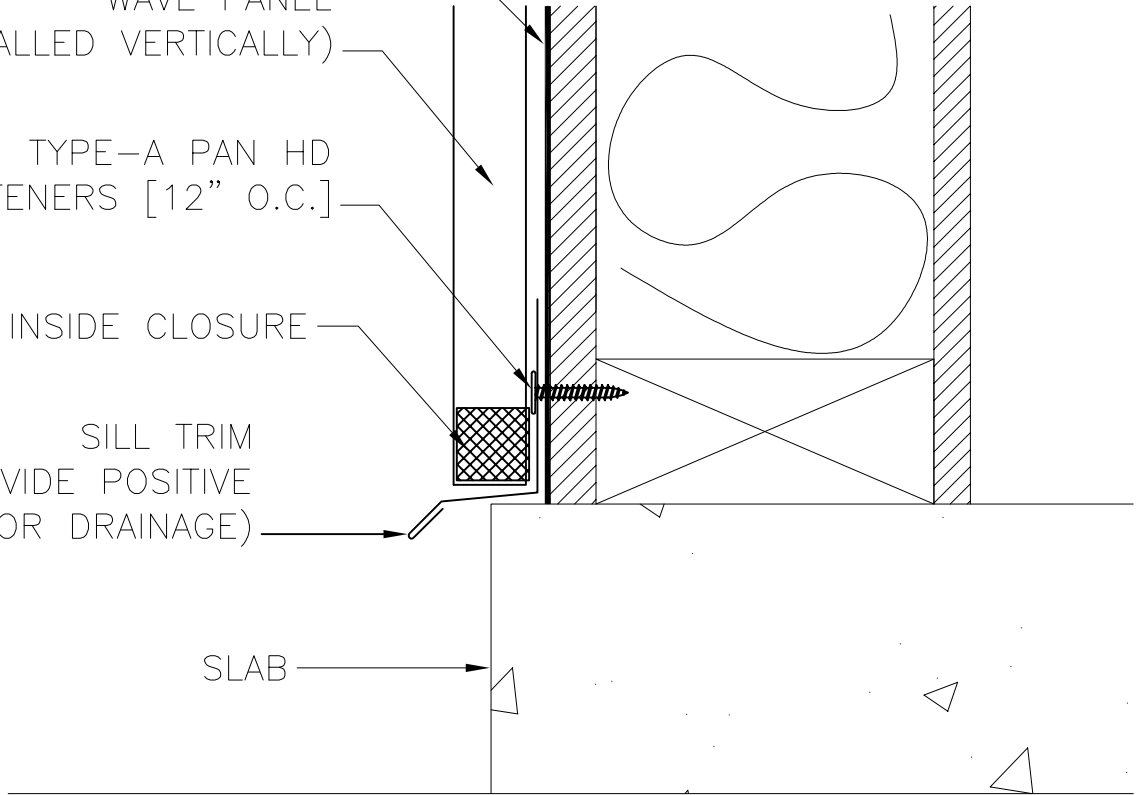
WAVE PANEL  
(INSTALLED VERTICALLY)

TYPE-A PAN HD  
FASTENERS [12" O.C.]

INSIDE CLOSURE

SILL TRIM  
(PROVIDE POSITIVE  
SLOPE FOR DRAINAGE)

SLAB



**Architectural  
Building  
Components**

11625 N. HOUSTON ROSSLYN RD.  
HOUSTON, TX. 77086  
[www.archmetalroof.com](http://www.archmetalroof.com)

(281) 931-3986  
(800) 423-1105  
FAX: (281) 931-3989

DETAIL:  
BASE DETAIL

WAVE PANEL

DATE:  
04-16-08

DET.#