

11625 N. HOUSTON ROSSLYN RD.
HOUSTON, TX. 77086
www.archmetalroof.com

(281) 931-3986
(800) 423-1105
FAX: (281) 931-3989

PANEL:



STANDING SEAM PANEL

DETAIL:

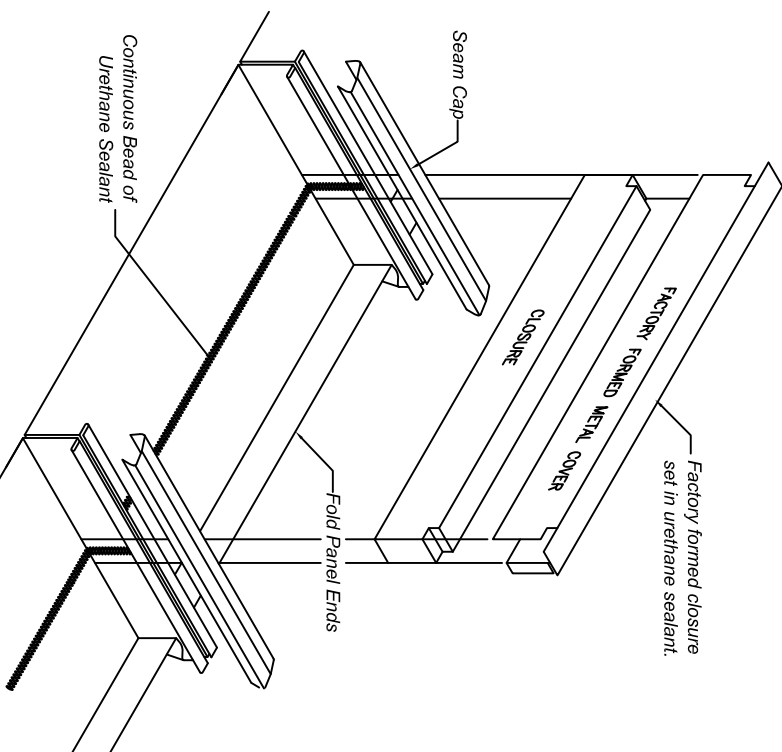
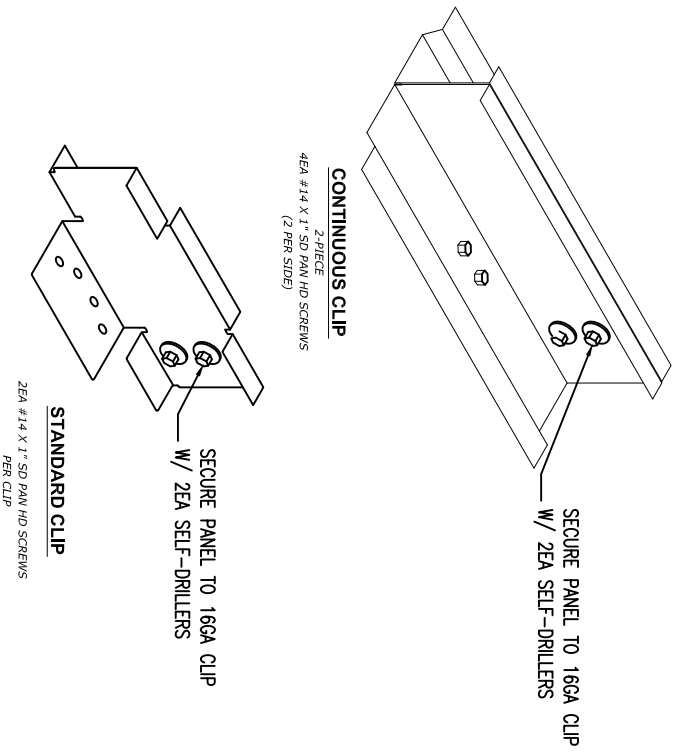
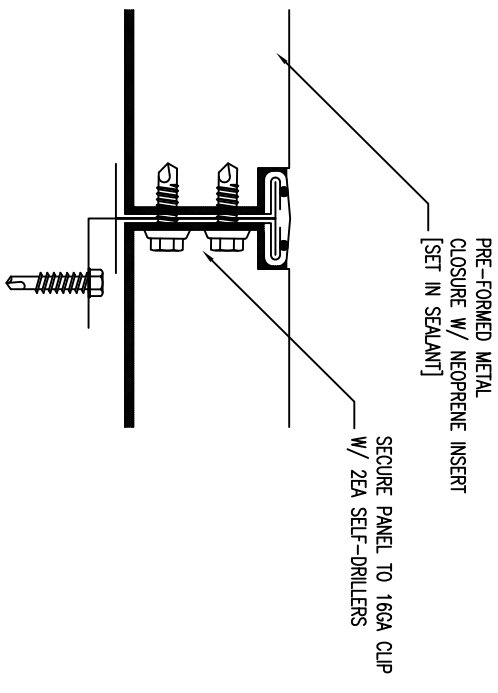
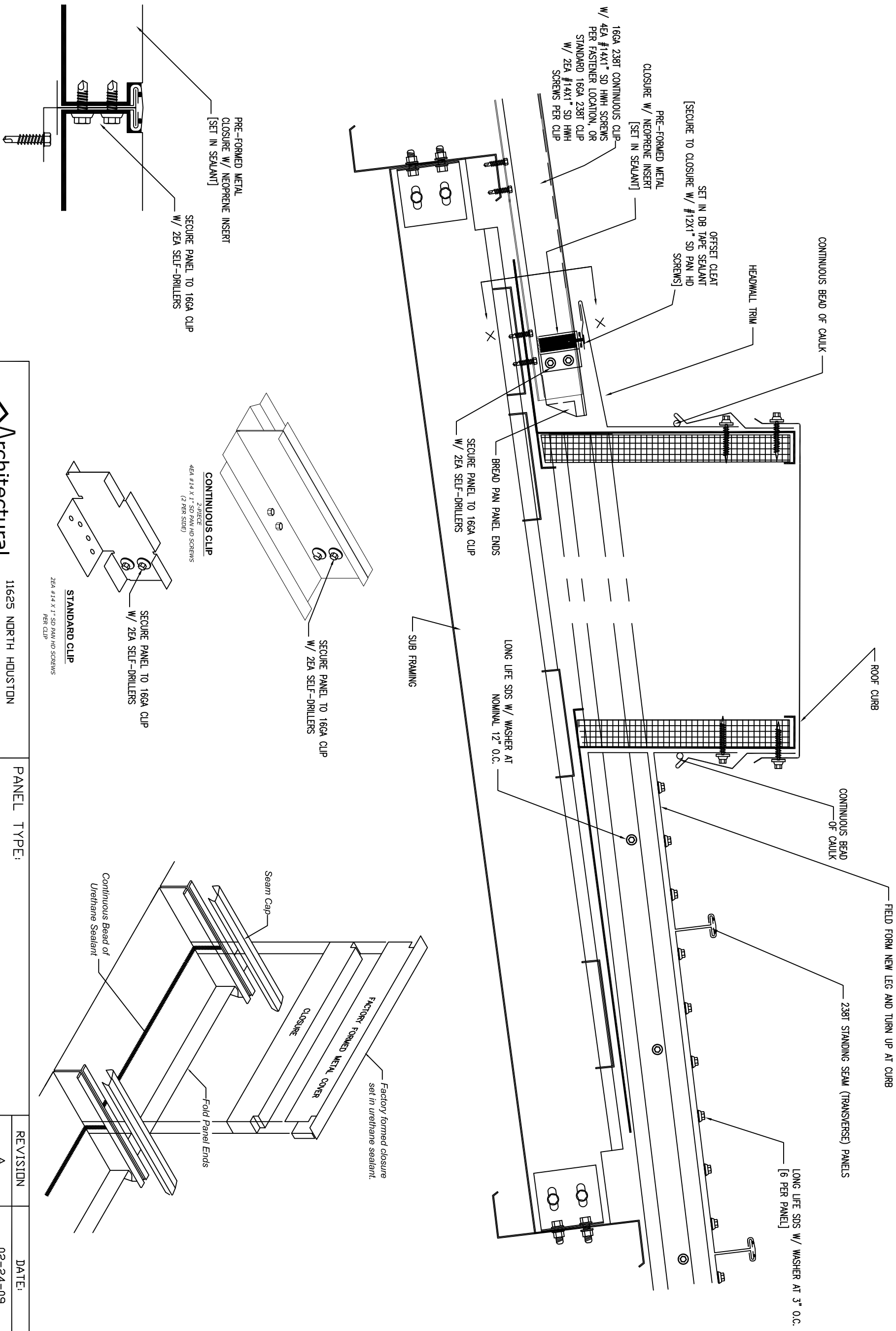
TRANSVERSE CURB (PLAN VIEW)

DATE:

01/13/09

DET. #

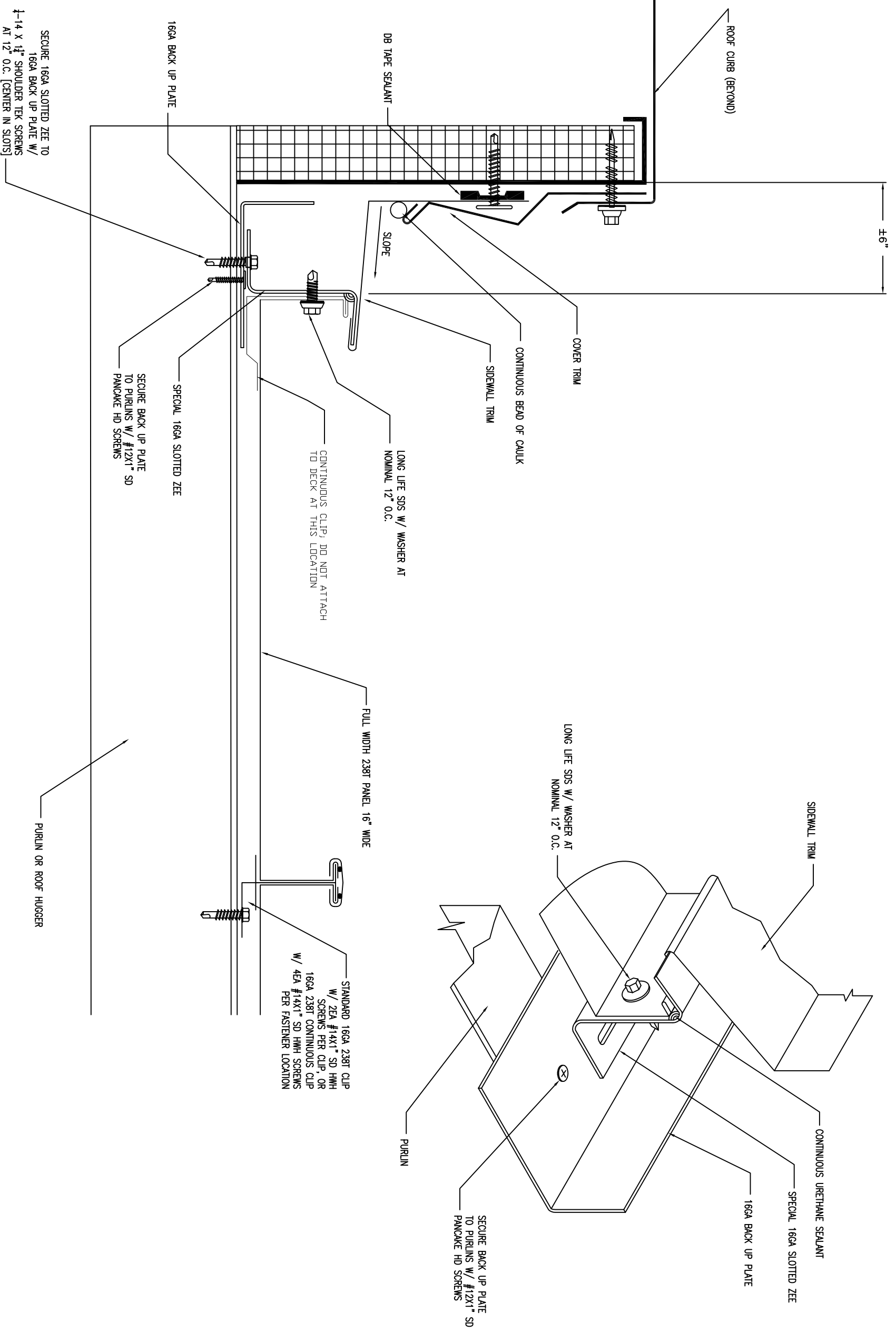
238C-1



SECTION X - X

Architectural Building Components
 WWW.ARCHMETALROOF.COM
 11625 NORTH HOUSTON
 ROSSLYN ROAD
 HOUSTON, TEXAS 77086
 PHONE: (281) 931-3989
 FAX: (281) 931-3986
 TOLL FREE: 1-800-423-1105

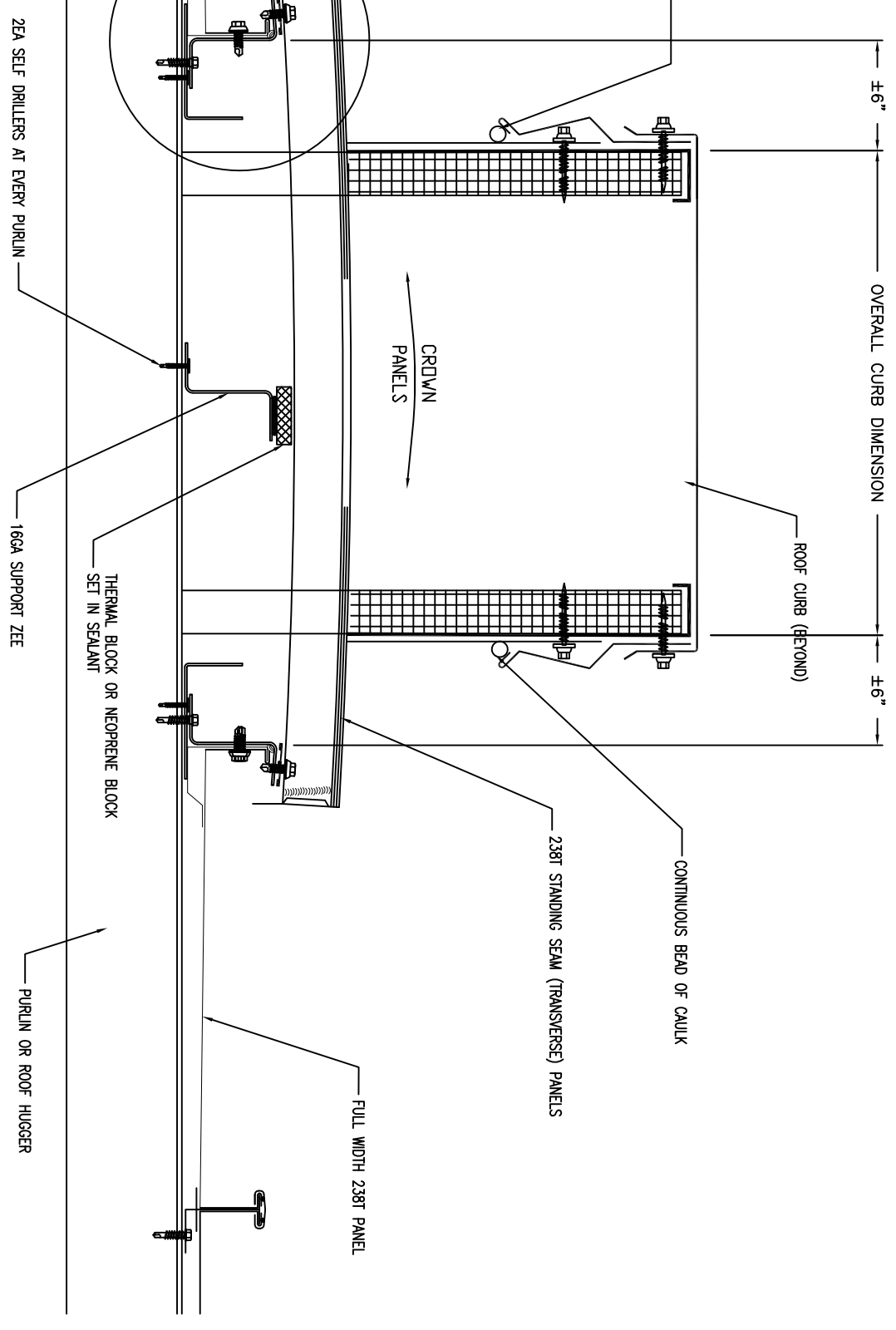
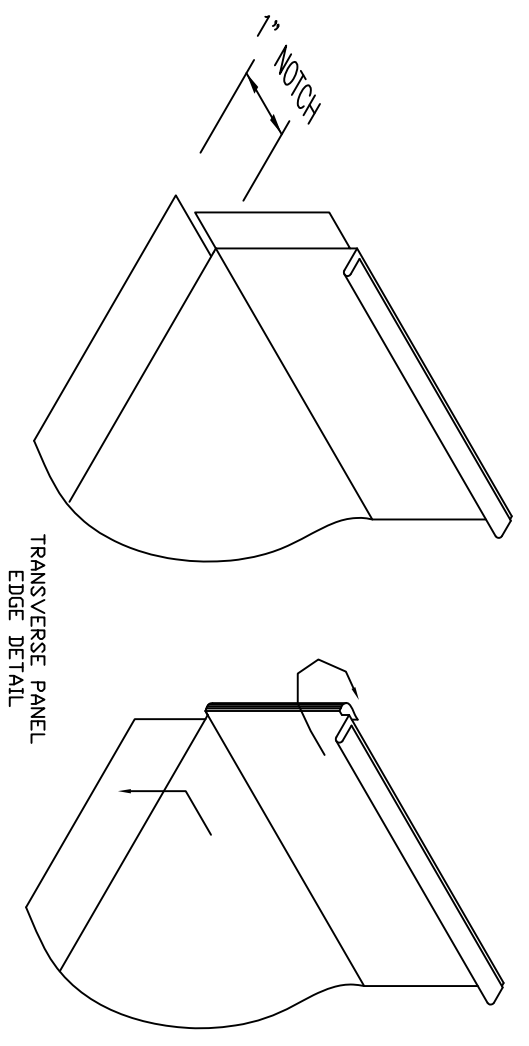
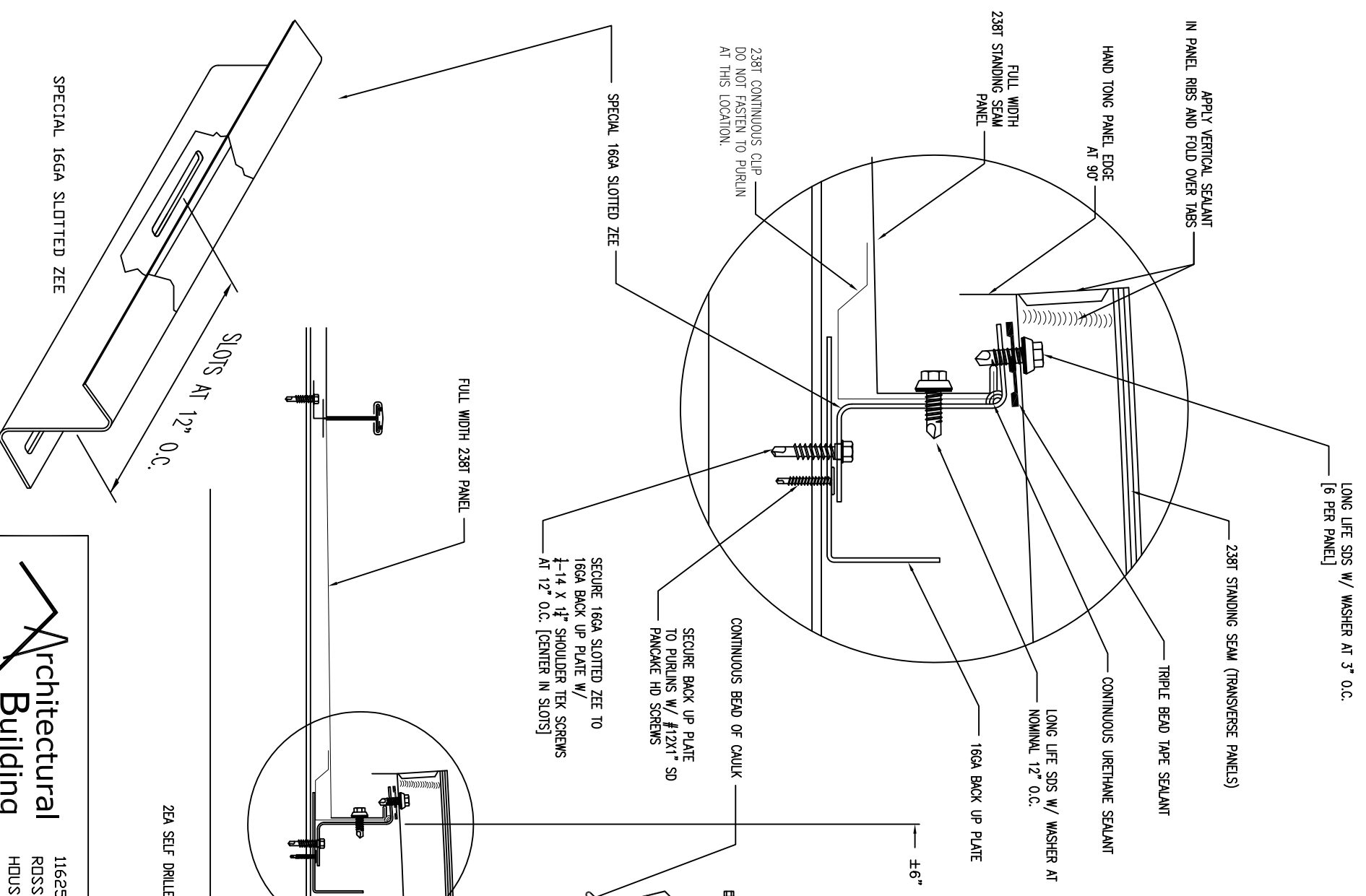
PANEL TYPE:		238T PANEL	
DETAIL DESCRIPTION:		SECTION AT TRANSVERSE CURB	
REVISION	DATE:		
A	02-24-09		
DRAWING NUMBER:		238C-2-OPEN	



Architectural Building Components
 WWW.ARCHMETALROOF.COM

11625 NORTH HOUSTON
 ROSSLYN ROAD
 HOUSTON, TEXAS 77086
 PHONE: (281) 931-3989
 FAX: (281) 931-3986
 TOLL FREE: 1-800-423-1105

PANEL TYPE: 238T STANDING SEAM	REVISION:	DATE:
	A	02-24-09
DETAIL DESCRIPTION: TRANSVERSE CURB RAKE	DRAWING NUMBER: 238C-3-OPEN	



Architectural Building Components
 WWW.ARCHMETALROOF.COM

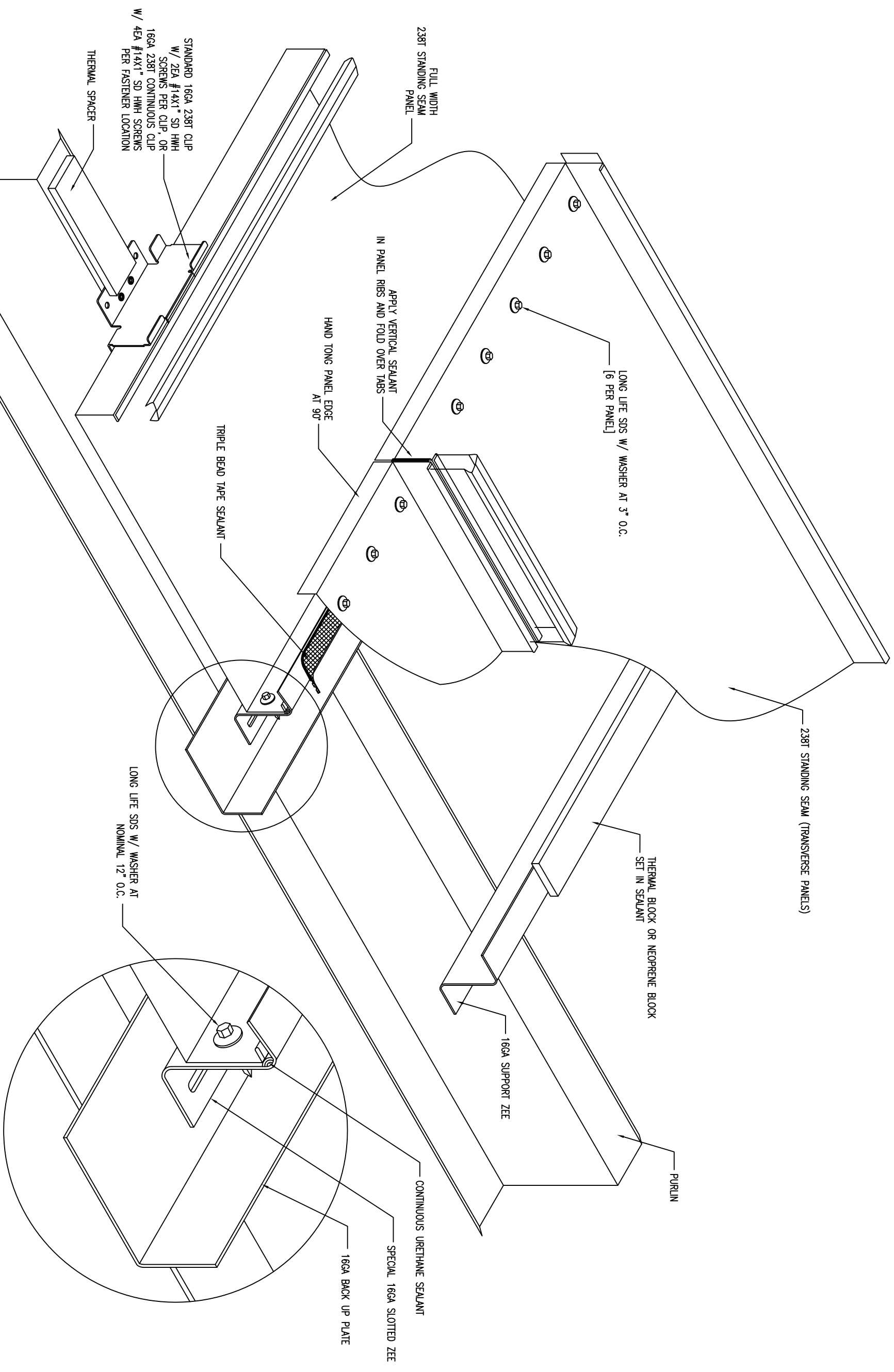
11625 NORTH HOUSTON
 ROSSLYN ROAD
 HOUSTON, TEXAS 77086
 PHONE: (281) 931-3989
 FAX: (281) 931-3986
 TOLL FREE: 1-800-423-1105

PANEL TYPE:
238T STANDING SEAM

DETAIL DESCRIPTION:
SECTION AT TRANSVERSE PANEL

REVISION	DATE:
A	02-24-09
B	04-01-09

DRAWING NUMBER:
238C-4-OPEN



STANDARD 16GA 238T CLIP
 W/ 2EA #14X1" SD HHW
 SCREWS PER CLIP, OR
 16GA 238T CONTINUOUS CLIP
 W/ 4EA #14X1" SD HHW SCREWS
 PER FASTENER LOCATION

THERMAL SPACER

FULL WIDTH
 238T STANDING SEAM
 PANEL

LONG LIFE SDS W/ WASHER AT 3" O.C.
 [6 PER PANEL]

APPLY VERTICAL SEALANT
 IN PANEL RIBS AND FOLD OVER TABS

HAND TONG PANEL EDGE
 AT 90°

TRIPLE BEAD TAPE SEALANT

238T STANDING SEAM (TRANSVERSE PANELS)

THERMAL BLOCK OR NEOPRENE BLOCK
 SET IN SEALANT

16GA SUPPORT ZEE

PURLIN

LONG LIFE SDS W/ WASHER AT
 NOMINAL 12" O.C.

CONTINUOUS URETHANE SEALANT

SPECIAL 16GA SLOTTED ZEE

16GA BACK UP PLATE

Architectural Building Components
 WWW.ARCHMETALROOF.COM

11625 NORTH HOUSTON
 ROSSLYN ROAD
 HOUSTON, TEXAS 77086
 PHONE: (281) 931-3989
 FAX: (281) 931-3986
 TOLL FREE: 1-800-423-1105

PANEL TYPE:		238T PANEL	
DETAIL DESCRIPTION:		ASSEMBLY AT TRANSVERSE PANELS	
REVISION:	DATE:		
A	02-24-09		
DRAWING NUMBER:		238C-5-OPEN	