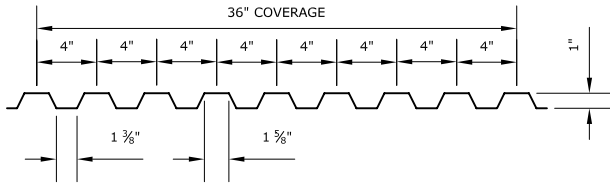


## 4" BOX RIB



### 4" BOX RIB PANEL PROFILE

Standard Width(s)- 38 1/4" (36" Coverage)

### Applications

The 4" box rib is an exposed fastener panel with 36" coverage that can be used on roof and wall applications. The 4" box rib is made with a continuous pattern of 1" tall ribs on 4" centers, engineered for maximum structural stiffness.

### Substrates

Purlins-Joists-Hat Channels

### Standard Materials

Alum-Zinc coated steel

### Standard Gauge

22 ga. 24 ga.

### Finishes

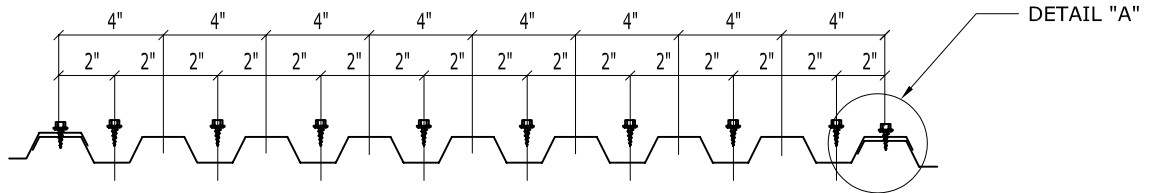
Acrylic Coated Galvalume and Fluoropolymer (Kynar 500)

### Texture

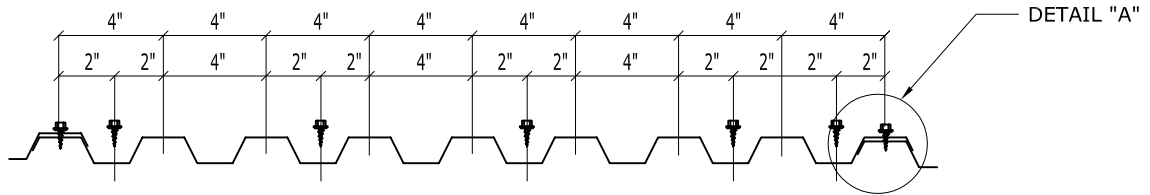
Smooth

### Manufacturing

Factory

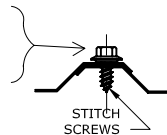


PANEL FASTENER LOCATIONS  
@ PANEL ENDS



PANEL FASTENER LOCATIONS  
@ MIDDLE OF PANEL

SIDE LAP FASTENERS ARE REQUIRED.  
TYPICAL SPACING IS 20" O.C..  
MINIMUM 1/2" X 1/4" TAPE SEALANT /  
IN PANEL SIDE LAPS.



DETAIL "A"