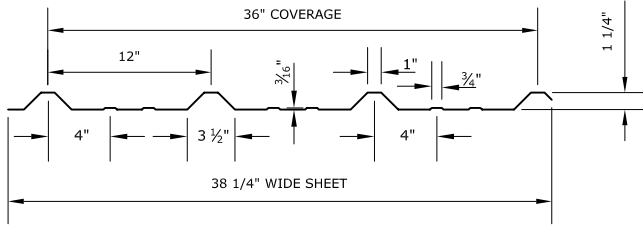


# PBR-PANEL



**PBR-PANEL PROFILE**

Standard Width(s)- 38 1/4" (36" Coverage)

**Applications**

PBR-panel is an exposed fastener panel with 36" coverage. It can be used on roof or wall applications. The PBR has a "purlin bearing" leg which helps insure the panel laps properly and the lap fasteners make the tightest possible compression seal in the panel side lap.

**Substrates**

Purlins-Joists-Hat Channels-Deck

**Standard Materials**

Alum-Zinc coated steel

**Standard Gauge**

24 ga. 26 ga.

**Finishes**

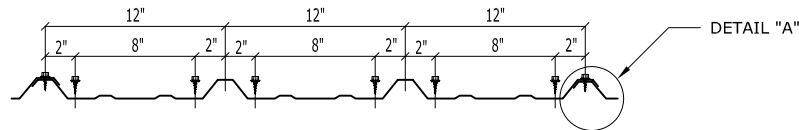
Acrylic Coated Galvalume and Fluoropolymer (Kynar 500)

**Texture**

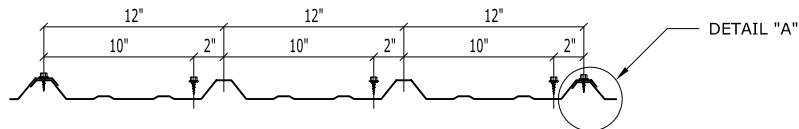
Smooth

**Manufacturing**

Factory

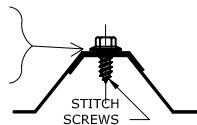


**PANEL FASTENER LOCATIONS @ PANEL ENDS**



**PANEL FASTENER LOCATIONS @ MIDDLE OF PANEL**

SIDE LAP FASTENERS ARE REQUIRED. TYPICAL SPACING IS 20" O.C... MINIMUM 1/2" X 3/8" TAPE SEALANT IN PANEL SIDE LAPS.



**DETAIL "A"**