

www.archmetalroof.com

(800) 423-1105

PANEL:

JSM 200 PANEL ROOF PANEL

DATE:

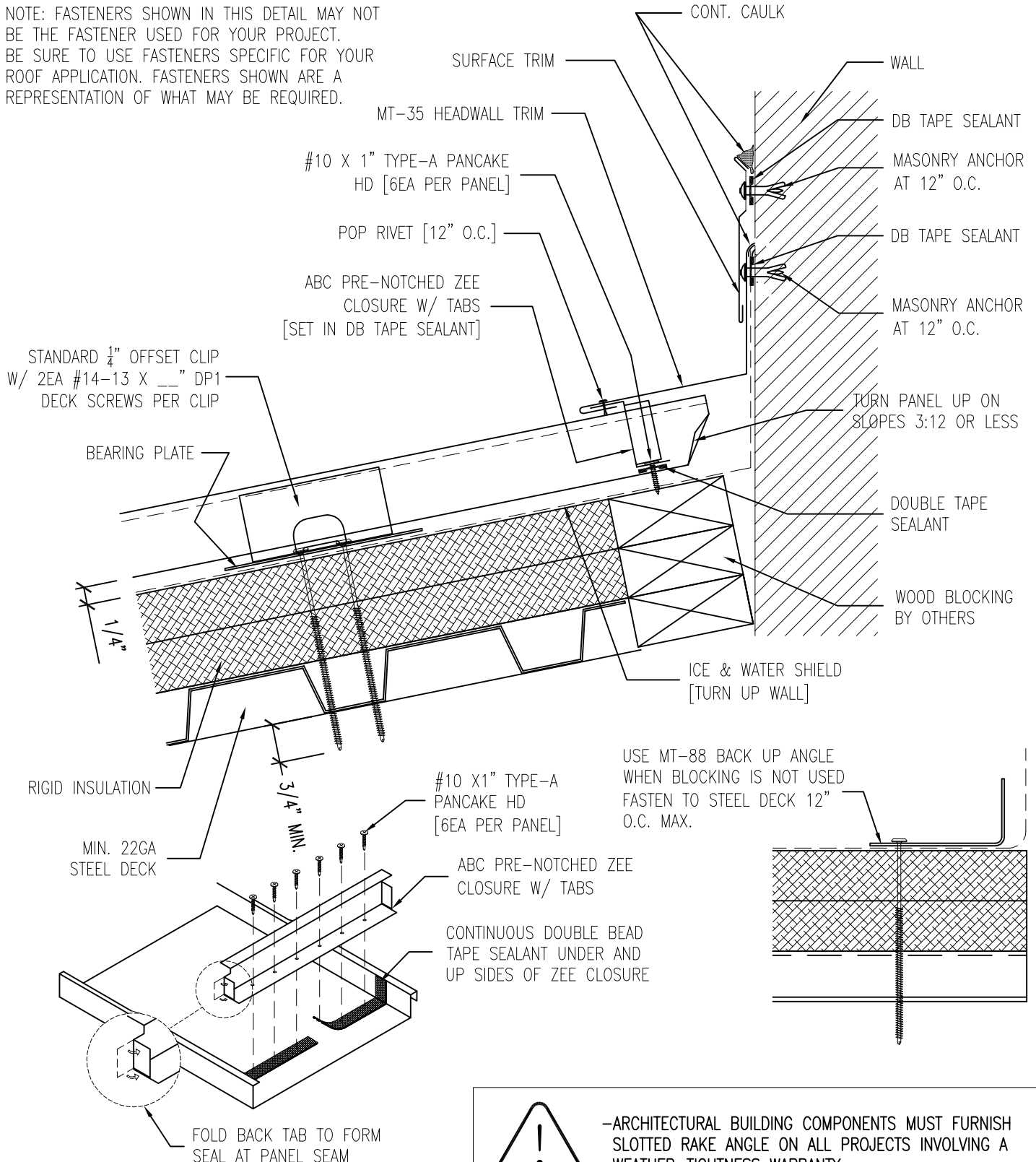
04/20/11

DETAIL: HEAD WALL WITH SURFACE MOUNT OVER METAL DECK

DET.#

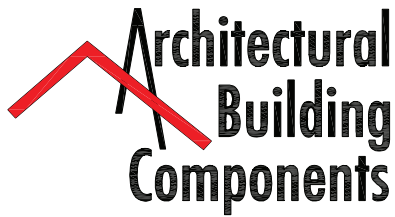
HW-200-01-M

NOTE: FASTENERS SHOWN IN THIS DETAIL MAY NOT BE THE FASTENER USED FOR YOUR PROJECT. BE SURE TO USE FASTENERS SPECIFIC FOR YOUR ROOF APPLICATION. FASTENERS SHOWN ARE A REPRESENTATION OF WHAT MAY BE REQUIRED.



-ARCHITECTURAL BUILDING COMPONENTS MUST FURNISH SLOTTED RAKE ANGLE ON ALL PROJECTS INVOLVING A WEATHER-TIGHTNESS WARRANTY

FILE NAME: abc-jsm-200-01-head-wall-with-surface-mount-over-metal-deck
 ISSUE DATE: 04-20-11
 REVISION DATE:



www.archmetalroof.com

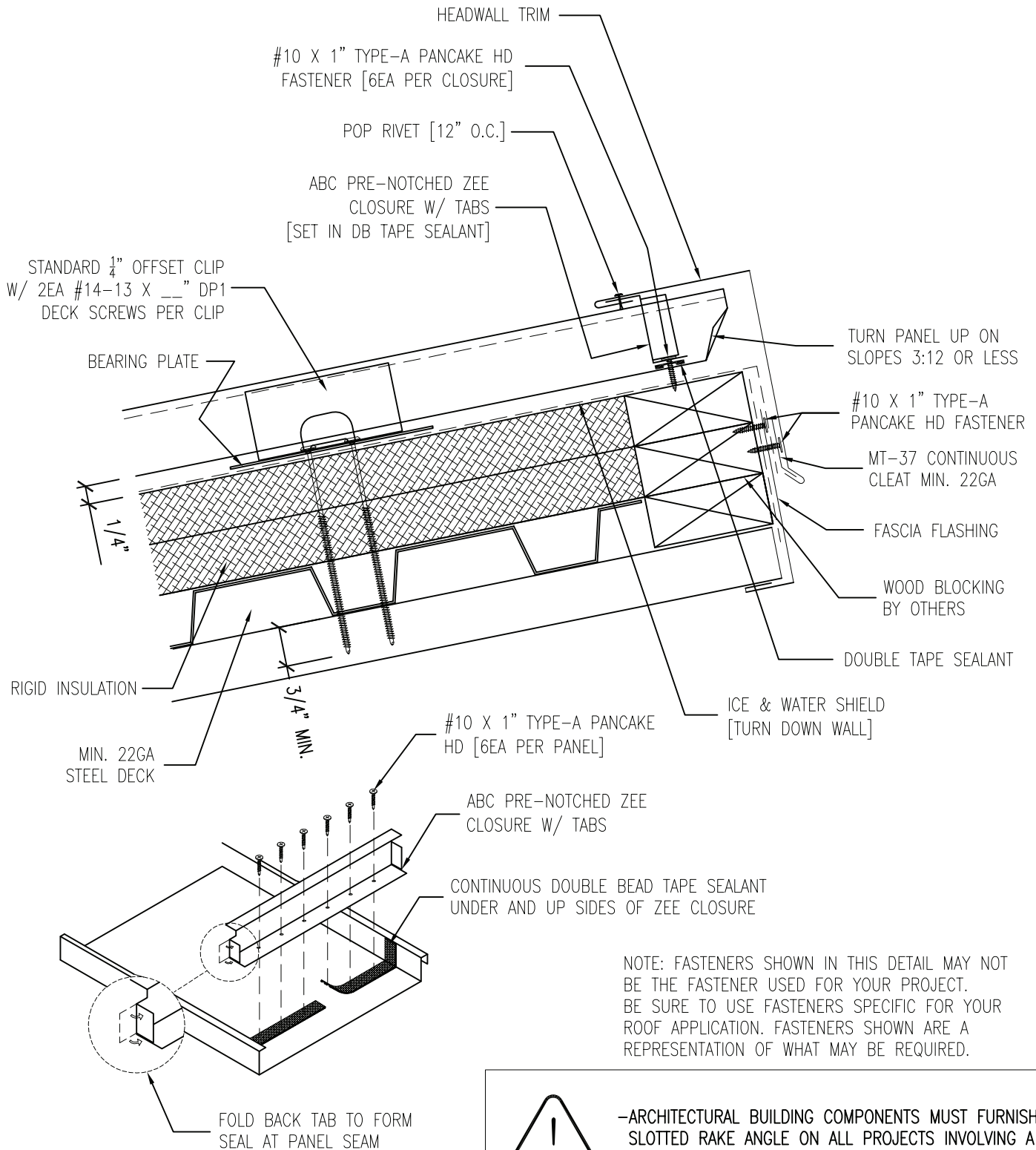
(800) 423-1105

PANEL:
JSM 200 PANEL ROOF PANEL

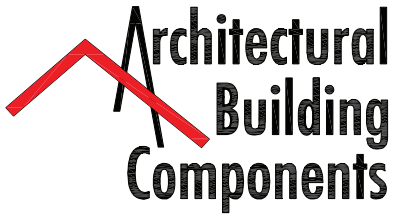
DATE:
04/20/11

DETAIL:
HIGH EAVE-OVER METAL DECK

DET.#
HE-200-01-M



-ARCHITECTURAL BUILDING COMPONENTS MUST FURNISH SLOTTED RAKE ANGLE ON ALL PROJECTS INVOLVING A WEATHER-TIGHTNESS WARRANTY



www.archmetalroof.com

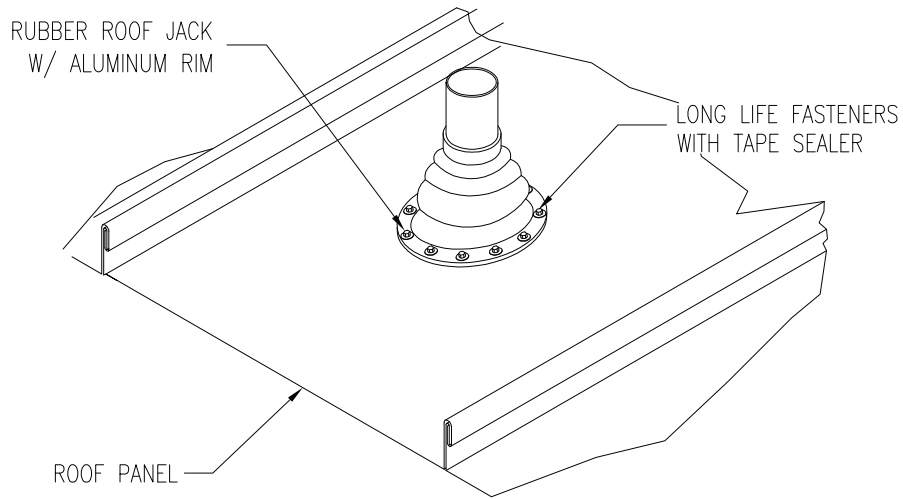
(800) 423-1105

PANEL: JSM 200 PANEL ROOF PANEL

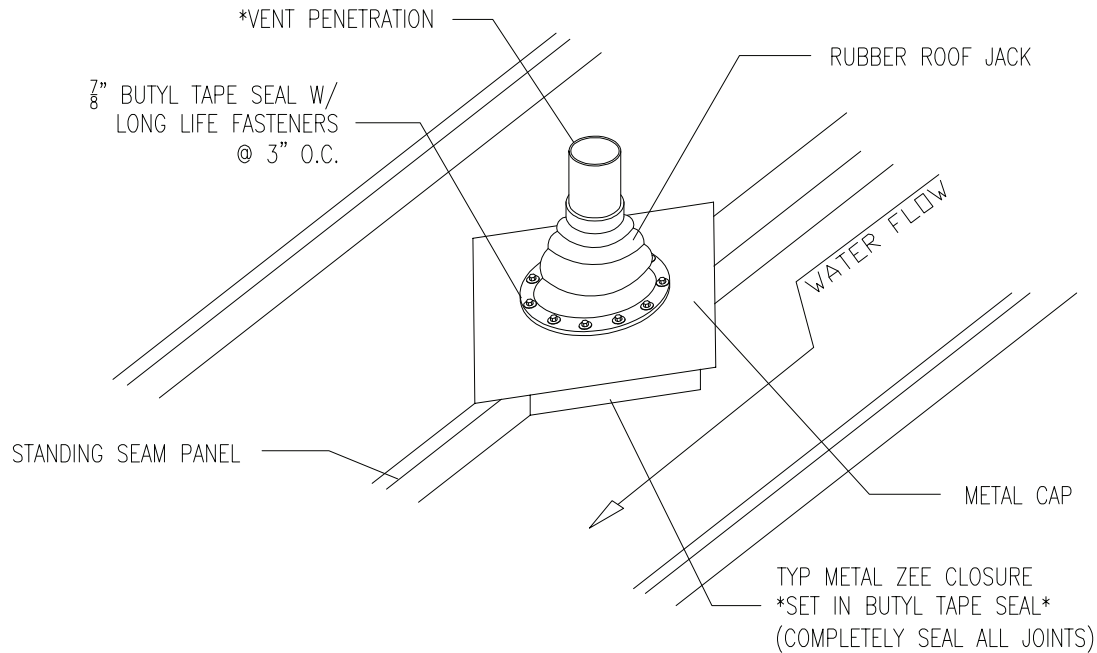
DETAIL: PIPE PENETRATION DETAILS

DATE: 04/20/11

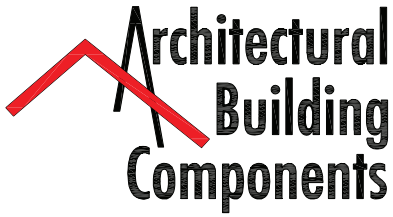
DET.# PP-200-01-M



TYP PIPE PENETRATION
WITH EPDM RUBBER BOOT



ALTERNATE PIPE DETAIL



www.archmetalroof.com

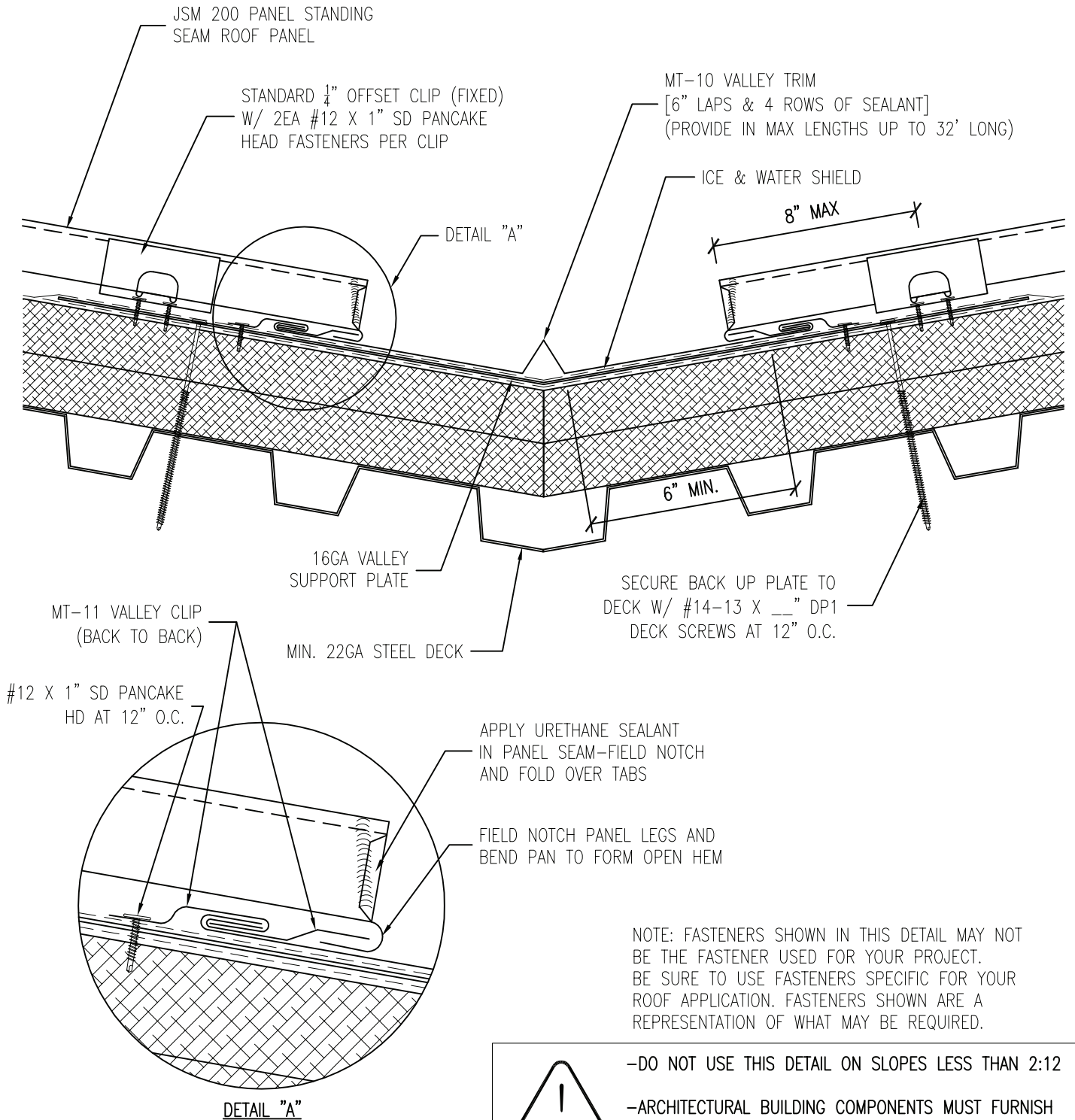
(800) 423-1105

PANEL: JSM 200 PANEL ROOF PANEL

DATE: 04/20/11

DETAIL: STANDARD VALLEY-OVER METAL DECK

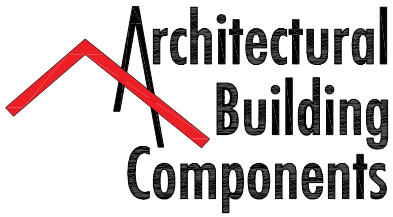
DET.# V-200-01-M



NOTE: FASTENERS SHOWN IN THIS DETAIL MAY NOT BE THE FASTENER USED FOR YOUR PROJECT. BE SURE TO USE FASTENERS SPECIFIC FOR YOUR ROOF APPLICATION. FASTENERS SHOWN ARE A REPRESENTATION OF WHAT MAY BE REQUIRED.



-DO NOT USE THIS DETAIL ON SLOPES LESS THAN 2:12
 -ARCHITECTURAL BUILDING COMPONENTS MUST FURNISH MT-10 VALLEY TRIM (IN MAX LENGTHS) & BACK UP PLATES ON ALL PROJECTS INVOLVING A WEATHER-TIGHTNESS WARRANTY



www.archmetalroof.com

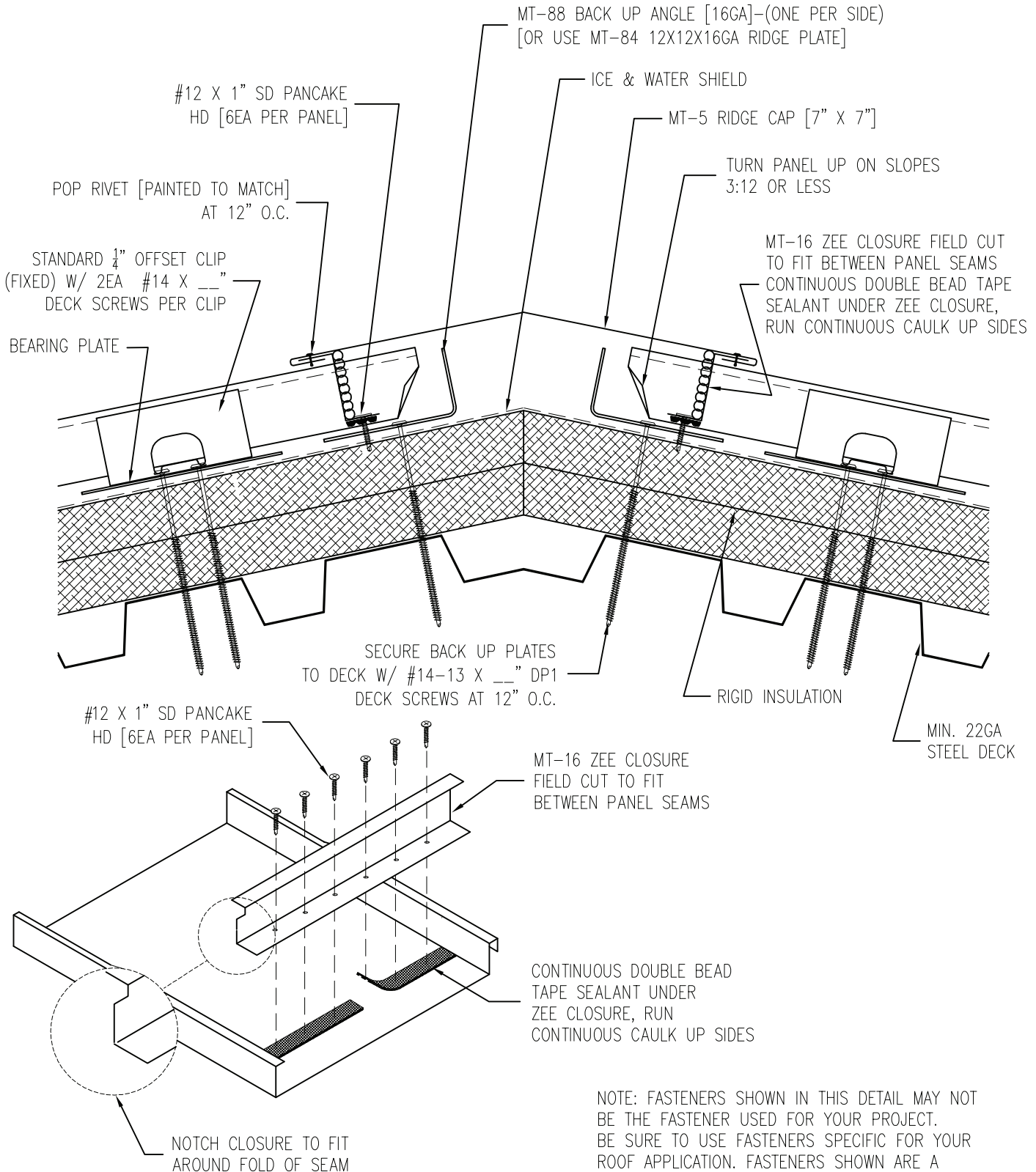
(800) 423-1105

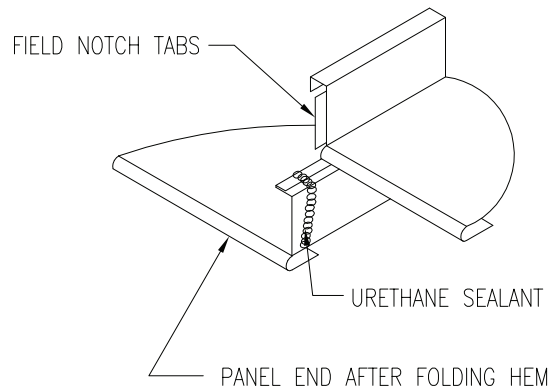
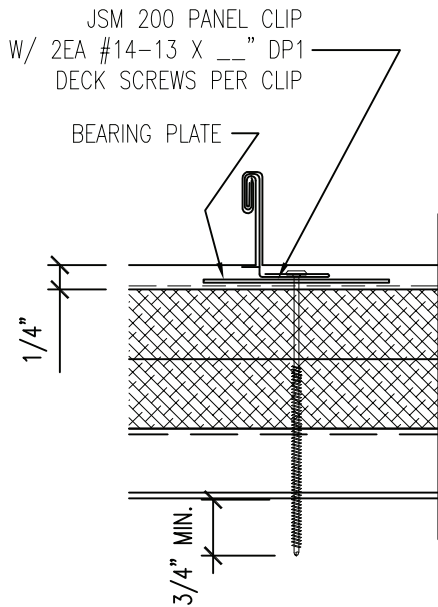
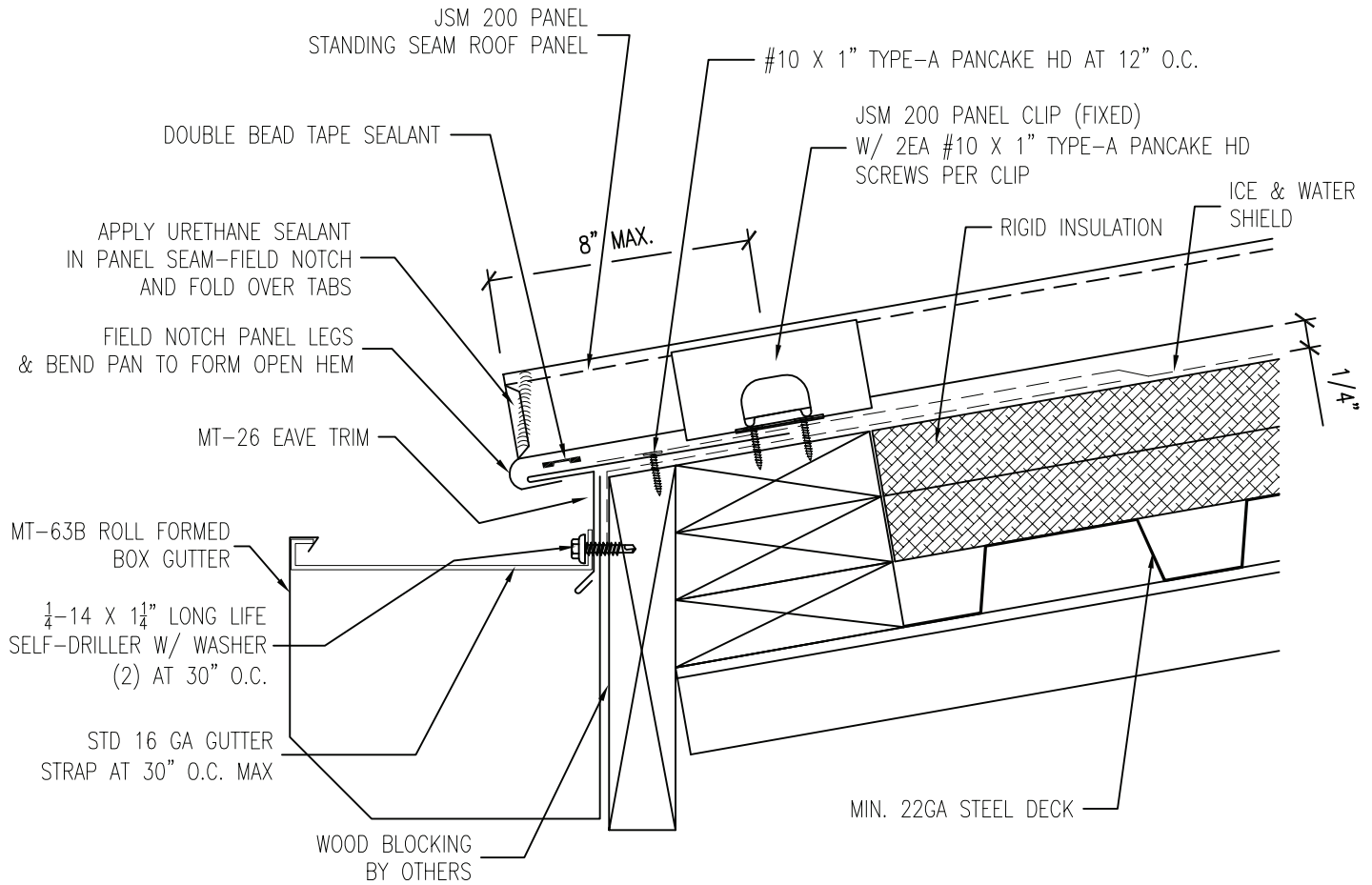
PANEL:
JSM 200 PANEL ROOF PANEL

DATE:
04/20/11

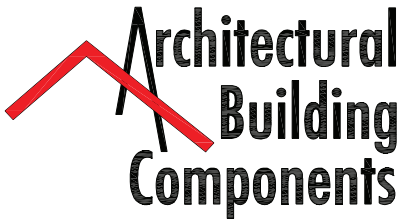
DETAIL:
FIXED HIP-OVER METAL DECK

DET.#
FH-200-02-M





NOTE: FASTENERS SHOWN IN THIS DETAIL MAY NOT BE THE FASTENER USED FOR YOUR PROJECT. BE SURE TO USE FASTENERS SPECIFIC FOR YOUR ROOF APPLICATION. FASTENERS SHOWN ARE A REPRESENTATION OF WHAT MAY BE REQUIRED.



www.archmetalroof.com

(800) 423-1105

PANEL:

JSM 200 PANEL ROOF PANEL

DETAIL:

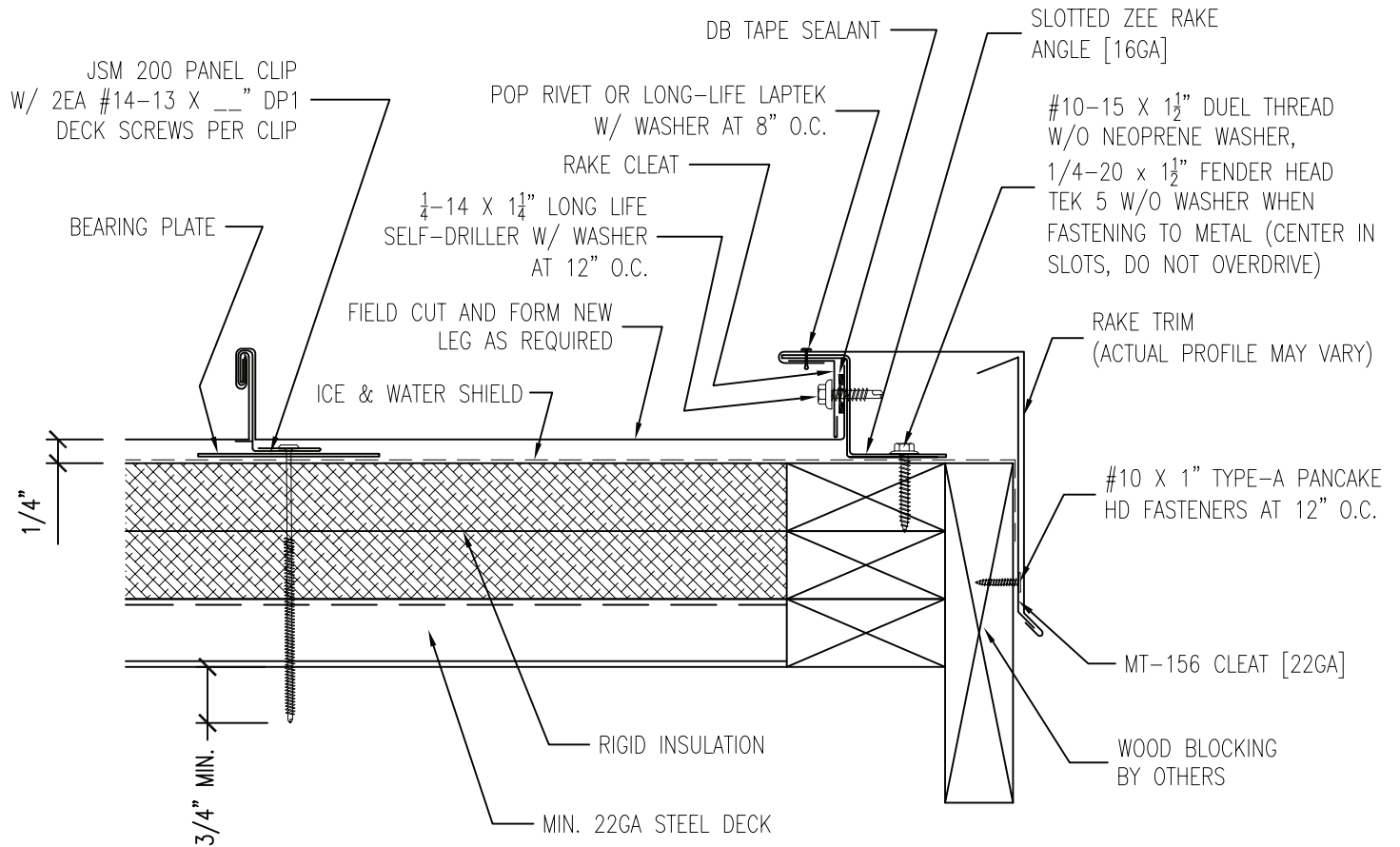
FLOATING RAKE-OVER METAL DECK W/ GUTTER

DATE:

04/20/11

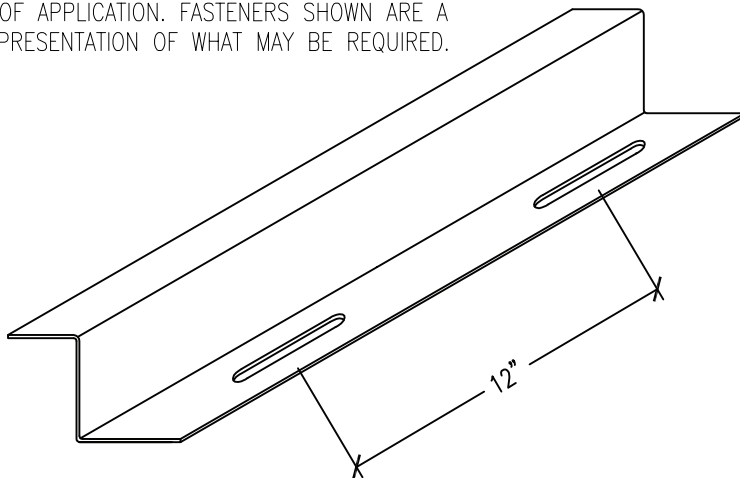
DET.#

FRG-200-02-M

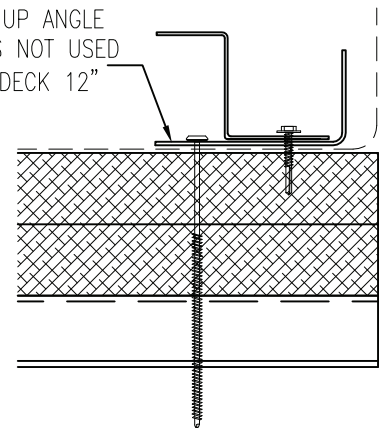


NOTE: FASTENERS SHOWN IN THIS DETAIL MAY NOT BE THE FASTENER USED FOR YOUR PROJECT. BE SURE TO USE FASTENERS SPECIFIC FOR YOUR ROOF APPLICATION. FASTENERS SHOWN ARE A REPRESENTATION OF WHAT MAY BE REQUIRED.

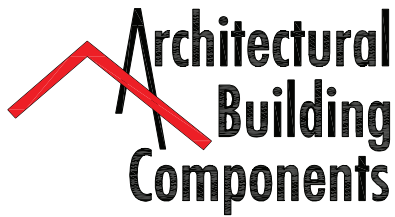
USE MT-88 BACK UP ANGLE WHEN BLOCKING IS NOT USED FASTEN TO STEEL DECK 12\"/>



SLOTTED RAKE ANGLE [16GA]



-ARCHITECTURAL BUILDING COMPONENTS MUST FURNISH SLOTTED RAKE ANGLE ON ALL PROJECTS INVOLVING A WEATHER-TIGHTNESS WARRANTY



www.archmetalroof.com

(800) 423-1105

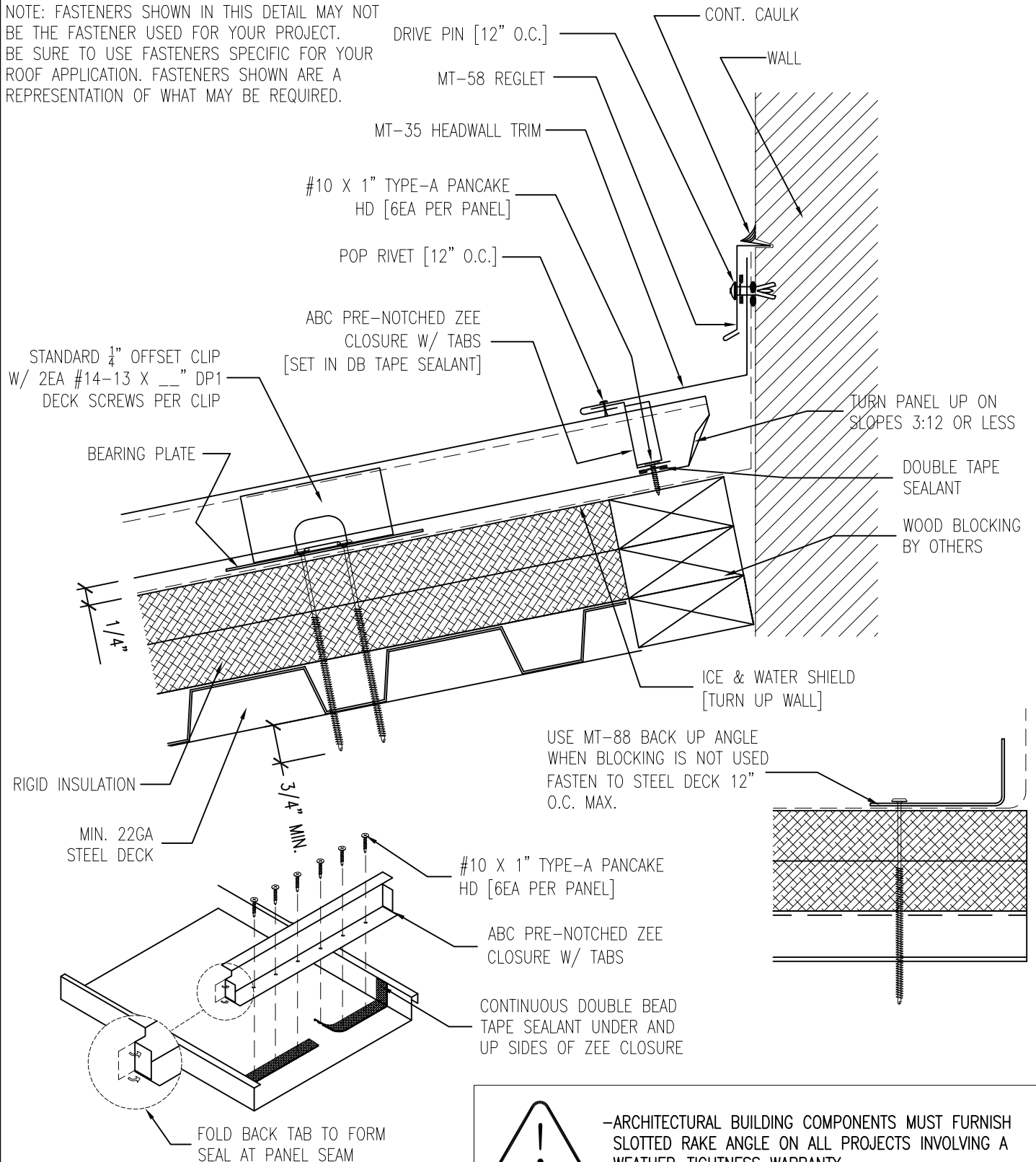
PANEL: JSM 200 PANEL ROOF PANEL

DATE: 04/20/11

DETAIL: HEAD WALL W/ REGLET OVER METAL DECK

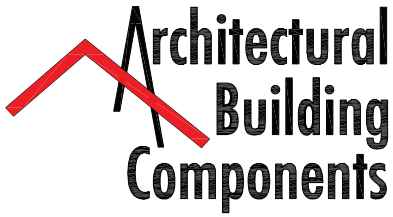
DET.# HW-200-02-M

NOTE: FASTENERS SHOWN IN THIS DETAIL MAY NOT BE THE FASTENER USED FOR YOUR PROJECT. BE SURE TO USE FASTENERS SPECIFIC FOR YOUR ROOF APPLICATION. FASTENERS SHOWN ARE A REPRESENTATION OF WHAT MAY BE REQUIRED.



-ARCHITECTURAL BUILDING COMPONENTS MUST FURNISH SLOTTED RAKE ANGLE ON ALL PROJECTS INVOLVING A WEATHER-TIGHTNESS WARRANTY

FILE NAME: abc-jsm-200-02-head-wall-with-reglet-over-metal-deck
 ISSUE DATE: 04-20-11
 REVISION DATE:



www.archmetalroof.com

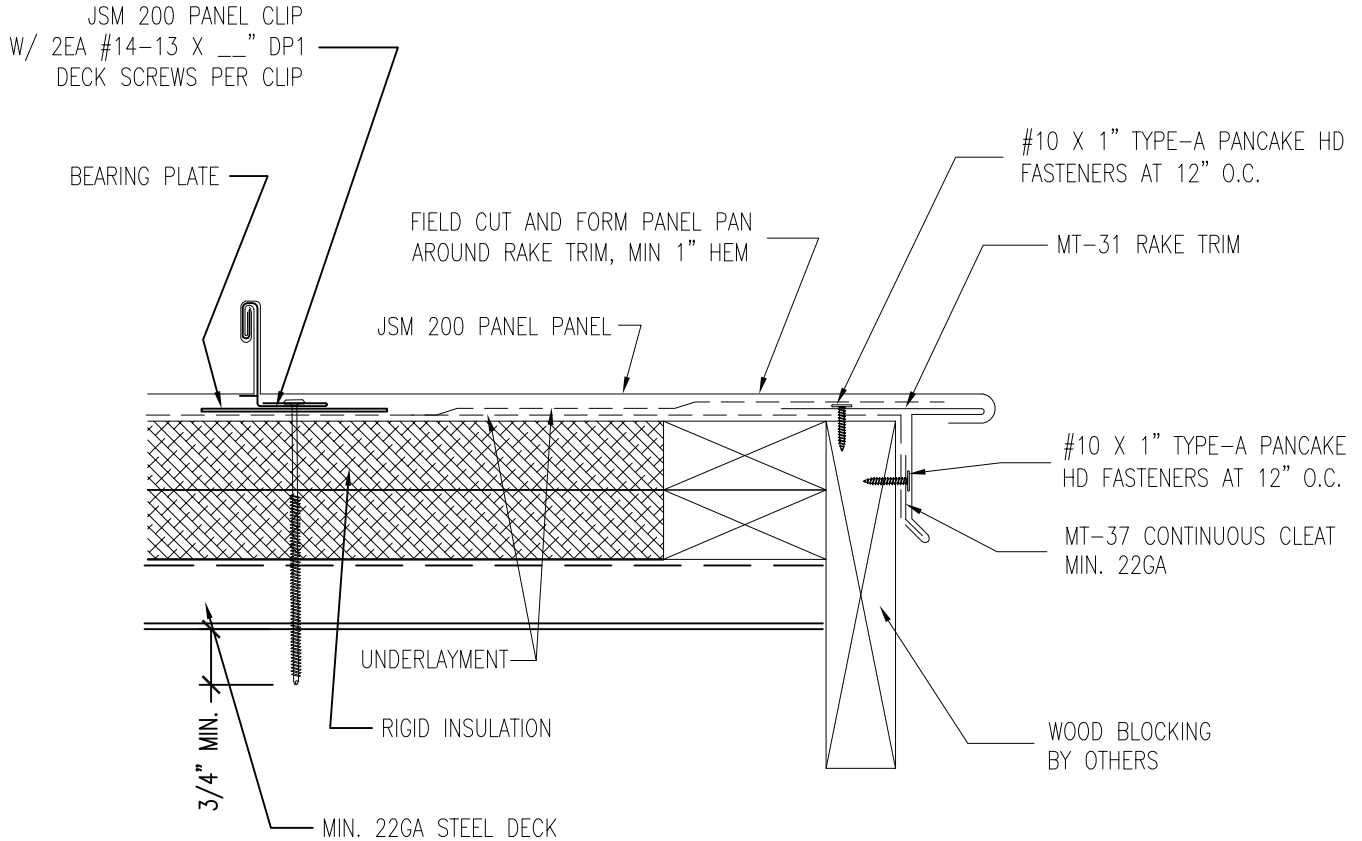
(800) 423-1105

PANEL: 
JSM 200 PANEL ROOF PANEL

DATE:
04/20/11

DETAIL:
FLOATING RAKE-OVER METAL DECK

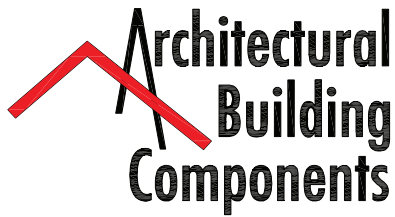
DET.#
FR-200-03-M



NOTE: FASTENERS SHOWN IN THIS DETAIL MAY NOT BE THE FASTENER USED FOR YOUR PROJECT. BE SURE TO USE FASTENERS SPECIFIC FOR YOUR ROOF APPLICATION. FASTENERS SHOWN ARE A REPRESENTATION OF WHAT MAY BE REQUIRED.



ARCHITECTURAL BUILDING COMPONENTS WILL ALLOW THIS DETAIL WHEN INVOLVING A WEATHER-TIGHTNESS WARRANTY (ONLY WHEN THE WIND LOAD IS 90 MPH OR LESS, IF WIND LOAD EXCEEDS 90 MPH A.B.C. REQUIRES THE USE OF THE SLOTTED RAKE ANGLE)



www.archmetalroof.com

(800) 423-1105

PANEL:

JSM 200 PANEL ROOF PANEL

DATE:

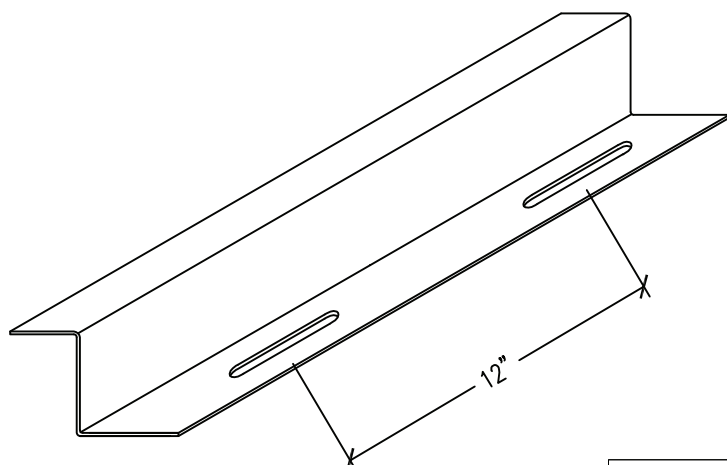
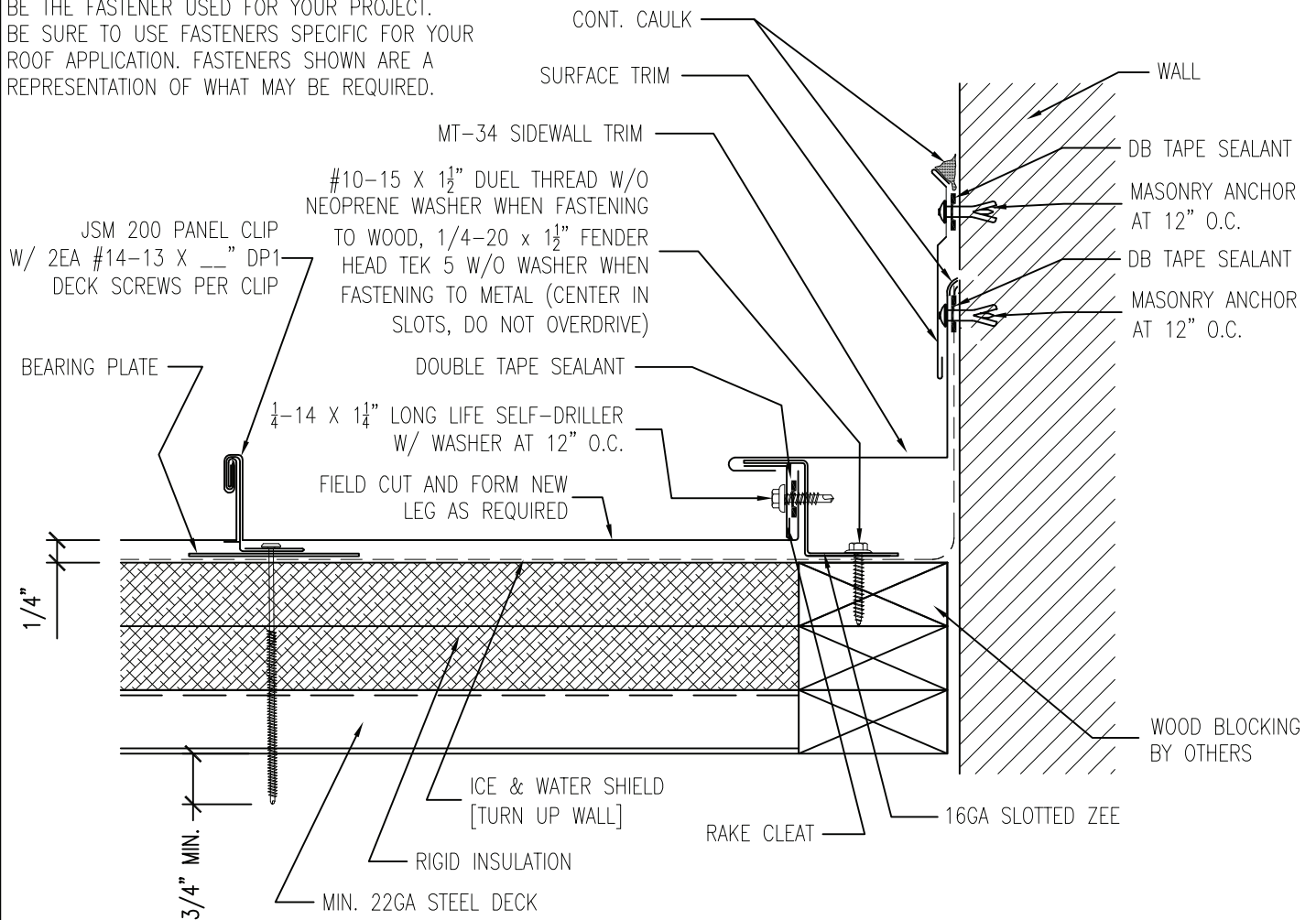
04/20/11

DETAIL: FLOATING RAKE WALL W/ SURFACE MOUNT OVER METAL DECK

DET.#

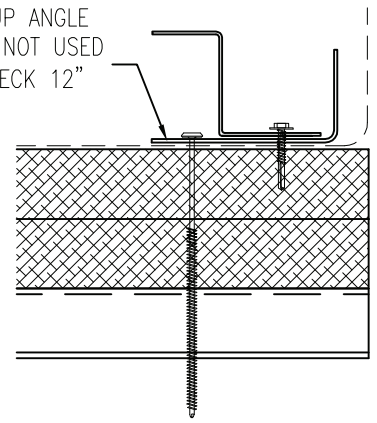
FRW-200-03-M

NOTE: FASTENERS SHOWN IN THIS DETAIL MAY NOT BE THE FASTENER USED FOR YOUR PROJECT. BE SURE TO USE FASTENERS SPECIFIC FOR YOUR ROOF APPLICATION. FASTENERS SHOWN ARE A REPRESENTATION OF WHAT MAY BE REQUIRED.



SLOTTED RAKE ANGLE [16GA]

USE MT-88 BACK UP ANGLE WHEN BLOCKING IS NOT USED FASTEN TO STEEL DECK 12" O.C. MAX.



-ARCHITECTURAL BUILDING COMPONENTS MUST FURNISH SLOTTED RAKE ANGLE ON ALL PROJECTS INVOLVING A WEATHER-TIGHTNESS WARRANTY

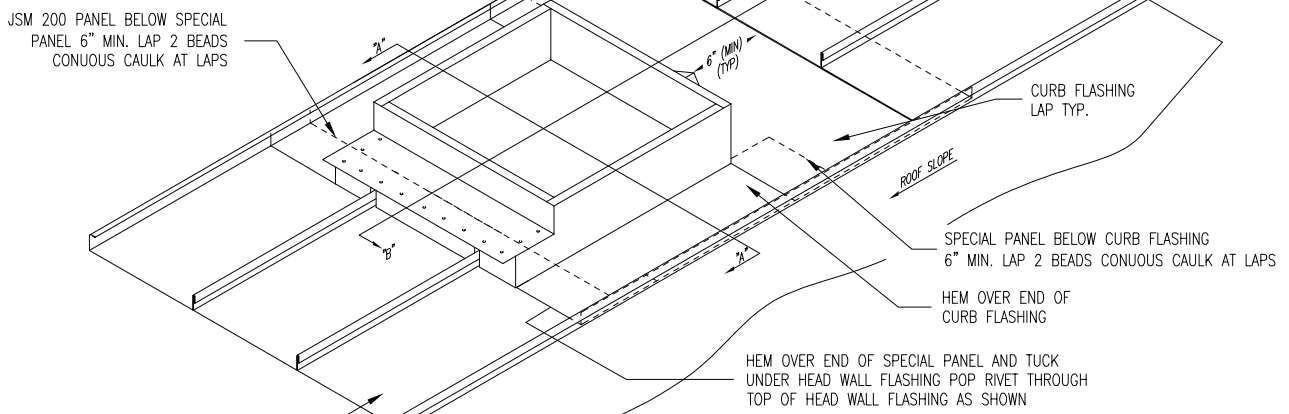
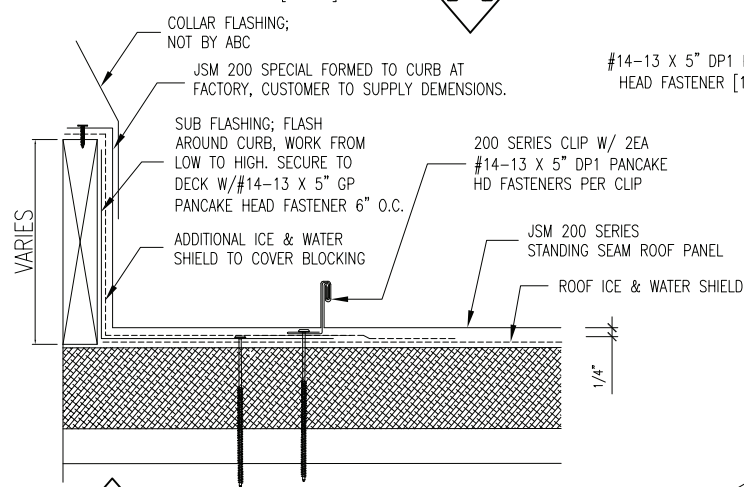
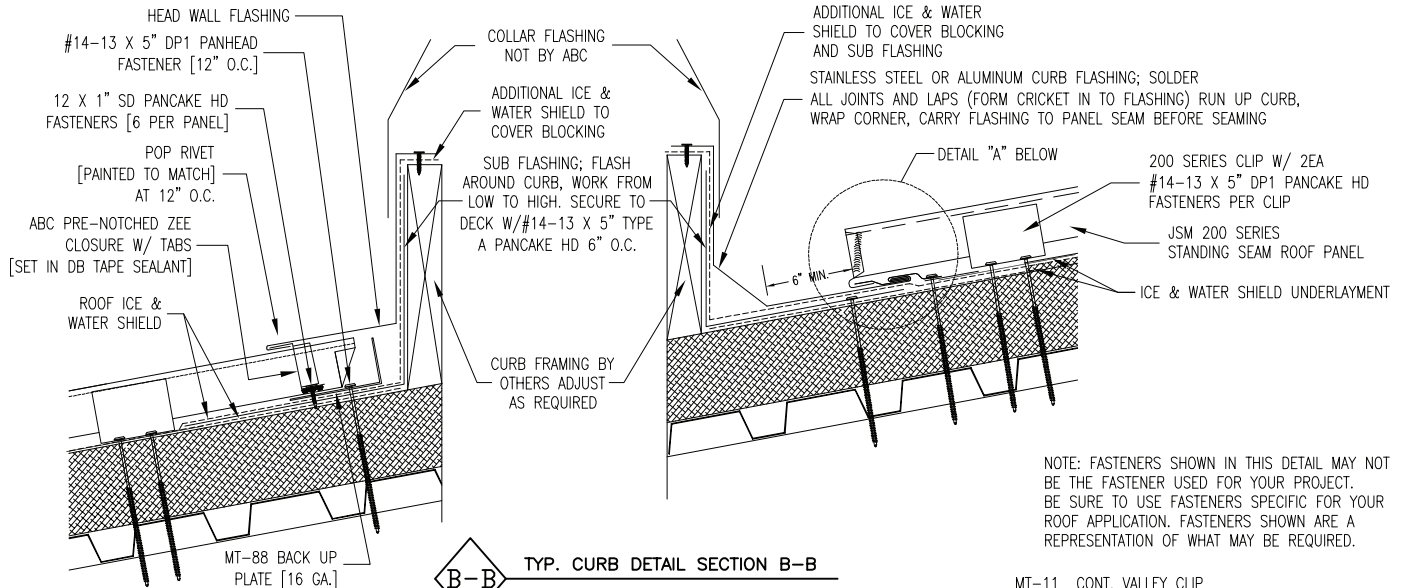
FILE NAME: abc-jsm-200-03-floating-rake-wall-with-surface-mount-over-metal-deck
 ISSUE DATE: 04-20-11
 REVISION DATE:

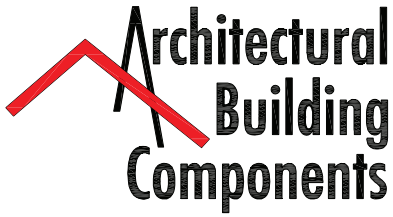
PANEL: JSM 200 PANEL ROOF PANEL

DATE: 04/20/11

DETAIL: CURB DETAIL OVER METAL DECK

DET.# CD-200-01-M





www.archmetalroof.com

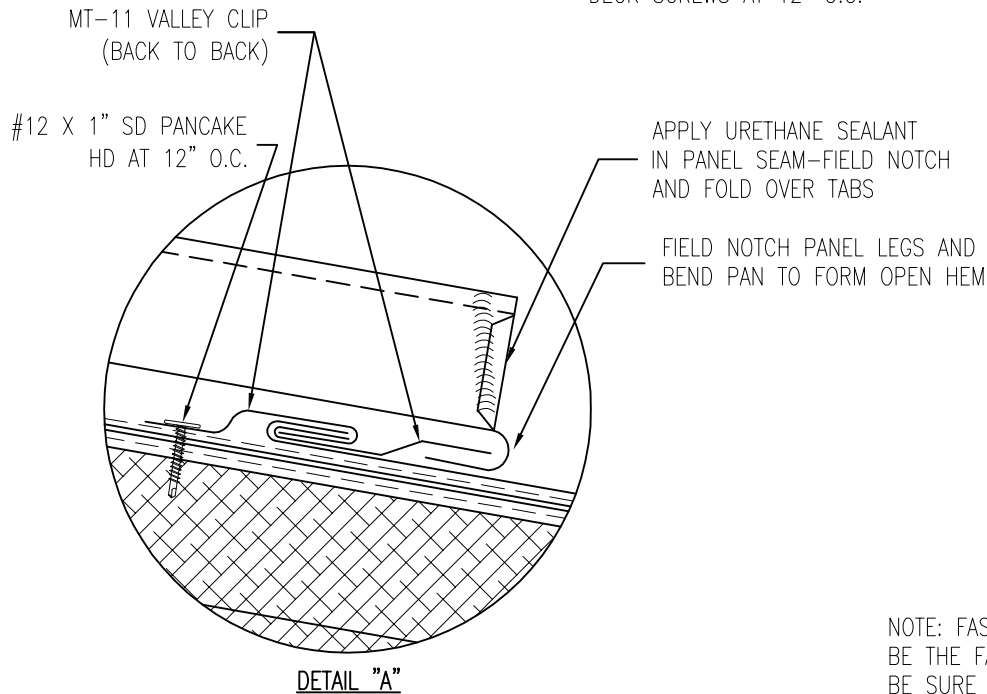
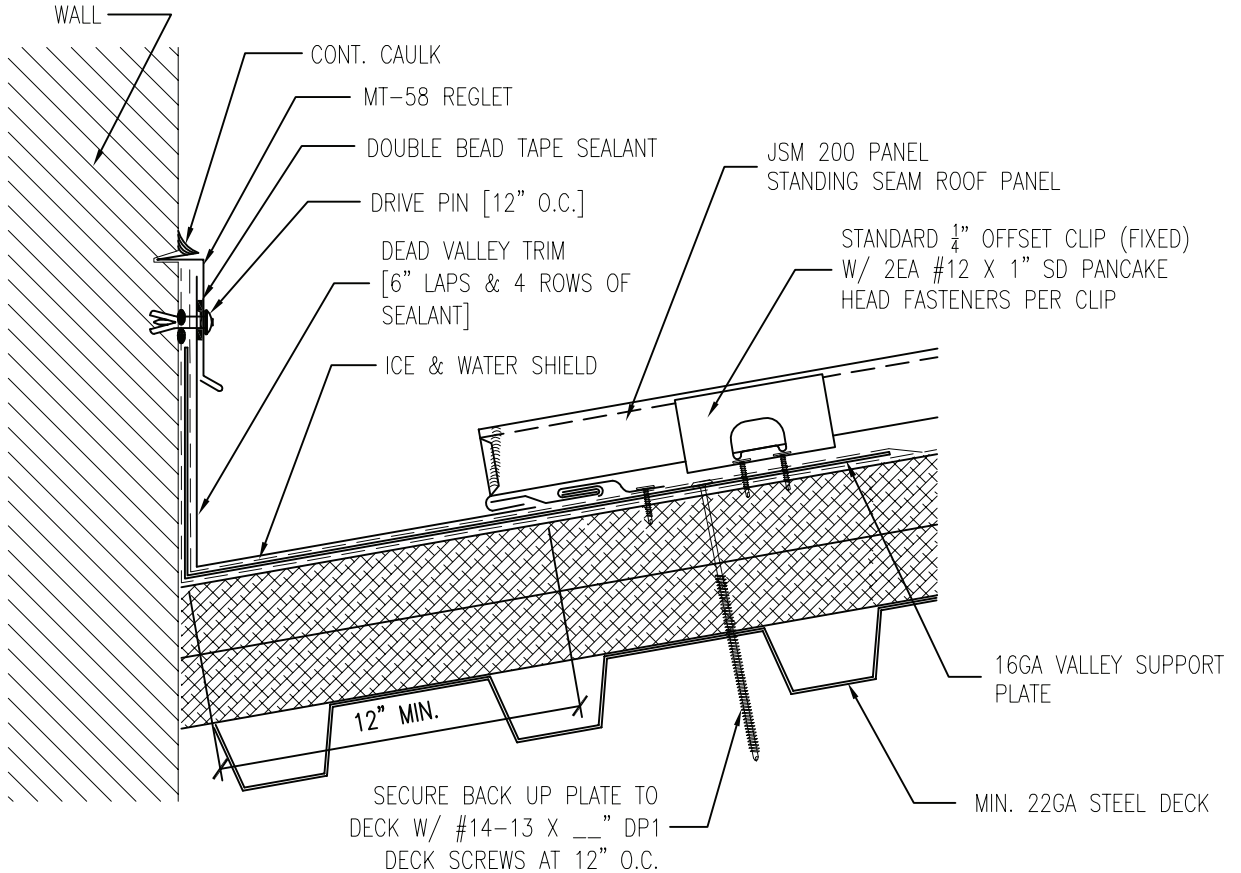
(800) 423-1105

PANEL: JSM 200 PANEL ROOF PANEL

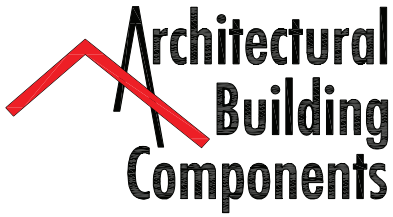
DATE: 04/20/11

DETAIL: DEAD VALLEY OVER METAL DECK

DET.# DV-200-01-M



NOTE: FASTENERS SHOWN IN THIS DETAIL MAY NOT BE THE FASTENER USED FOR YOUR PROJECT. BE SURE TO USE FASTENERS SPECIFIC FOR YOUR ROOF APPLICATION. FASTENERS SHOWN ARE A REPRESENTATION OF WHAT MAY BE REQUIRED.



www.archmetalroof.com

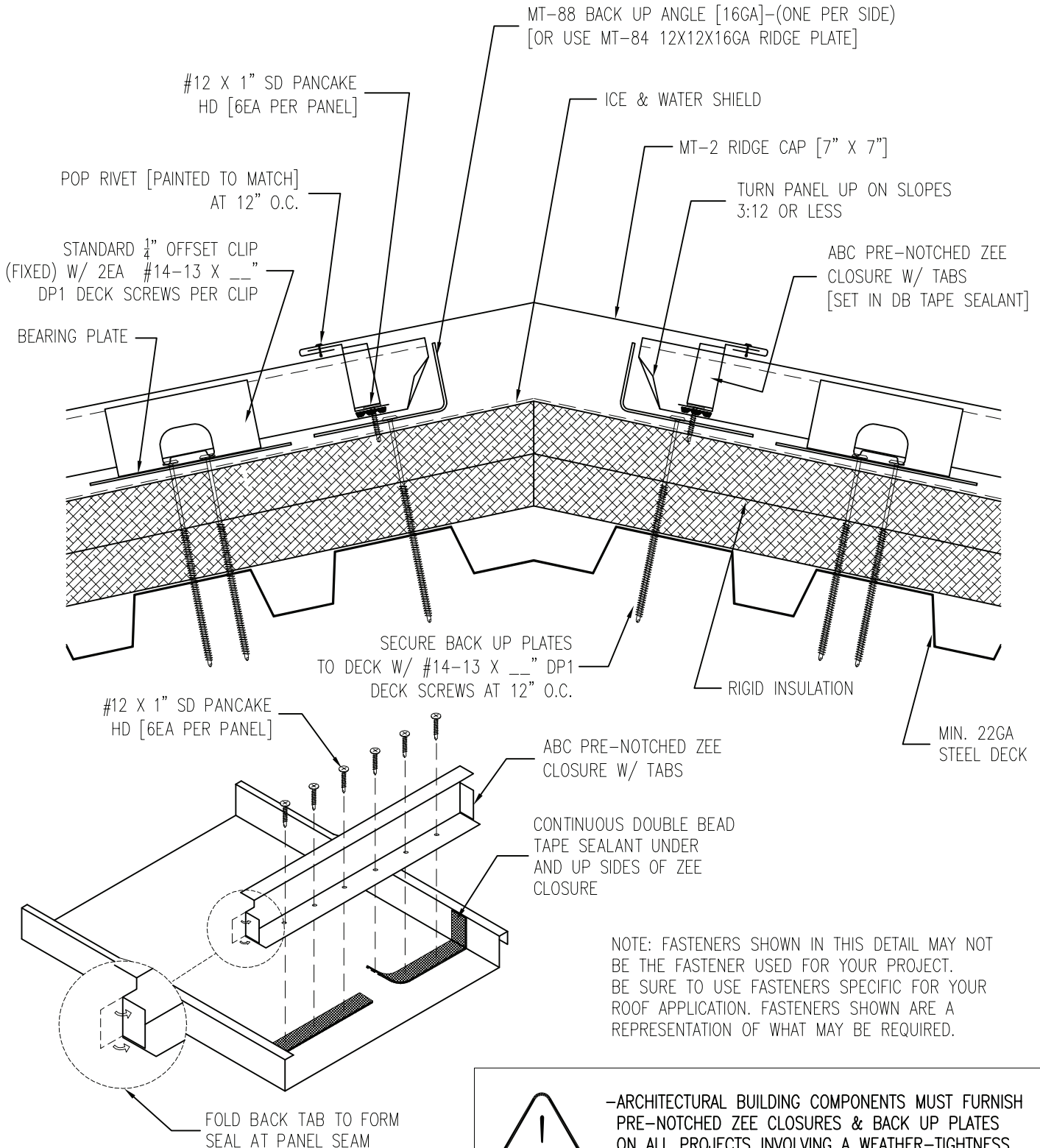
(800) 423-1105

PANEL: JSM 200 PANEL ROOF PANEL

DATE: 04/20/11

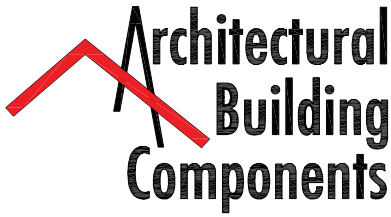
DETAIL: FIXED RIDGE-OVER METAL DECK

DET.# FR-200-01-M



-ARCHITECTURAL BUILDING COMPONENTS MUST FURNISH PRE-NOTCHED ZEE CLOSURES & BACK UP PLATES ON ALL PROJECTS INVOLVING A WEATHER-TIGHTNESS WARRANTY

FILE NAME: abc-jsm-200-01-fixed-ridge-over-metal-deck
ISSUE DATE: 04-20-11
REVISION DATE:



www.archmetalroof.com

(800) 423-1105

PANEL:

JSM 200 PANEL ROOF PANEL

DATE:

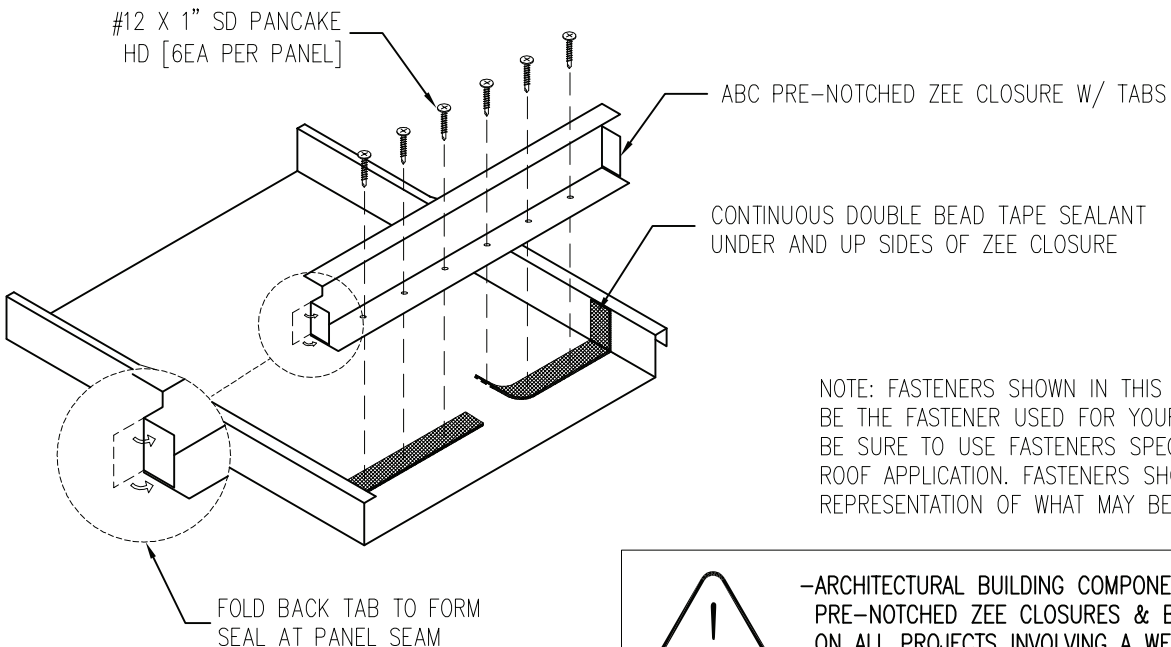
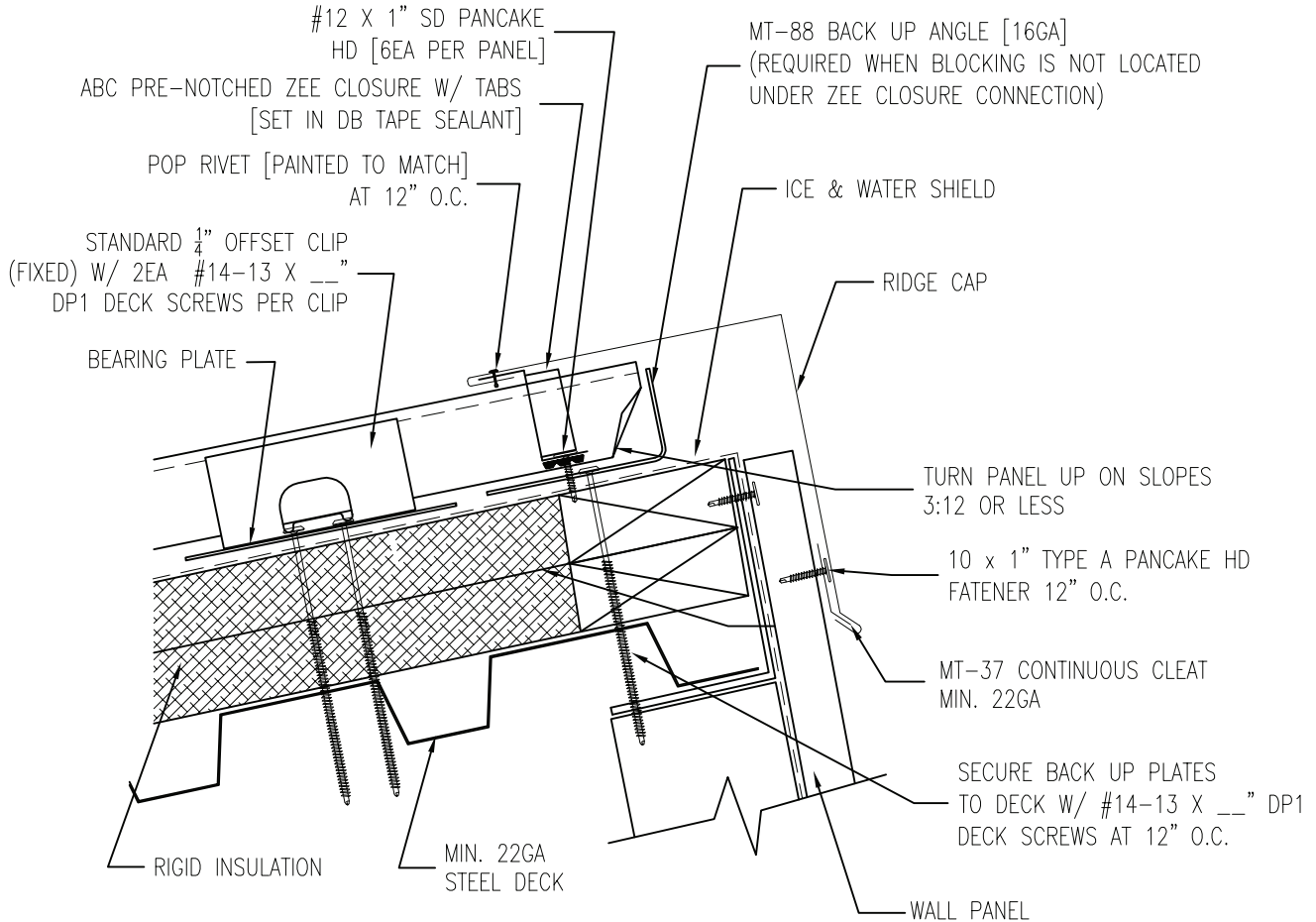
04/20/11

DETAIL:

FIXED SHED RIDGE OVER METAL DECK WITH WALL PANEL

DET.#

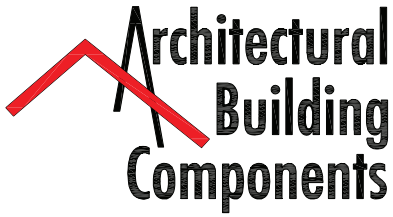
FSR-200-01-M



NOTE: FASTENERS SHOWN IN THIS DETAIL MAY NOT BE THE FASTENER USED FOR YOUR PROJECT. BE SURE TO USE FASTENERS SPECIFIC FOR YOUR ROOF APPLICATION. FASTENERS SHOWN ARE A REPRESENTATION OF WHAT MAY BE REQUIRED.



-ARCHITECTURAL BUILDING COMPONENTS MUST FURNISH PRE-NOTCHED ZEE CLOSURES & BACK UP PLATES ON ALL PROJECTS INVOLVING A WEATHER-TIGHTNESS WARRANTY



www.archmetalroof.com

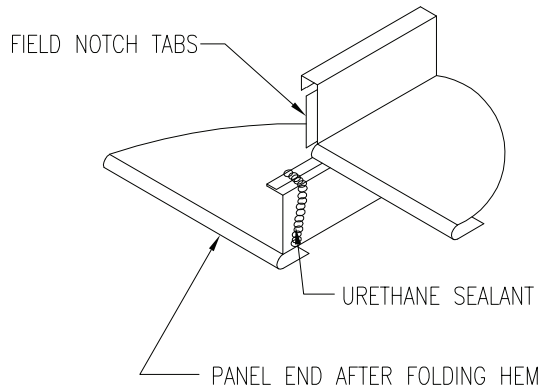
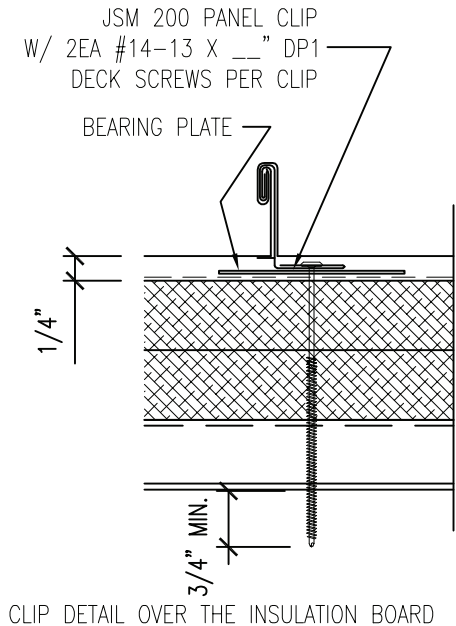
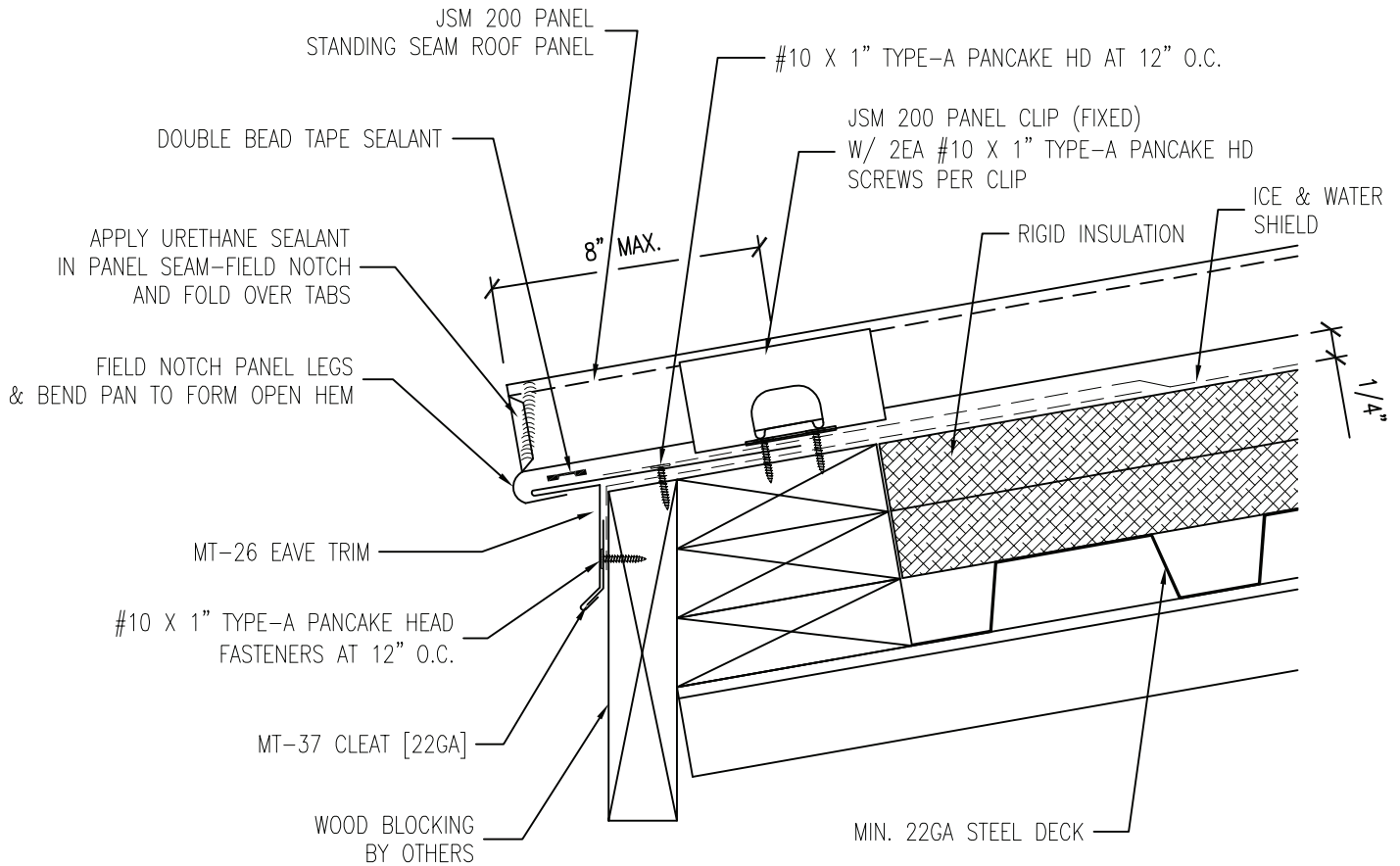
(800) 423-1105

PANEL:
JSM 200 PANEL ROOF PANEL

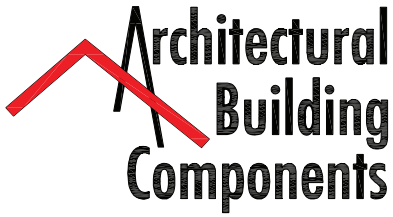
DATE:
04/20/11

DETAIL:
FLOATING EAVE-OVER METAL DECK

DET.#
FE-200-01-M



NOTE: FASTENERS SHOWN IN THIS DETAIL MAY NOT BE THE FASTENER USED FOR YOUR PROJECT. BE SURE TO USE FASTENERS SPECIFIC FOR YOUR ROOF APPLICATION. FASTENERS SHOWN ARE A REPRESENTATION OF WHAT MAY BE REQUIRED.



www.archmetalroof.com

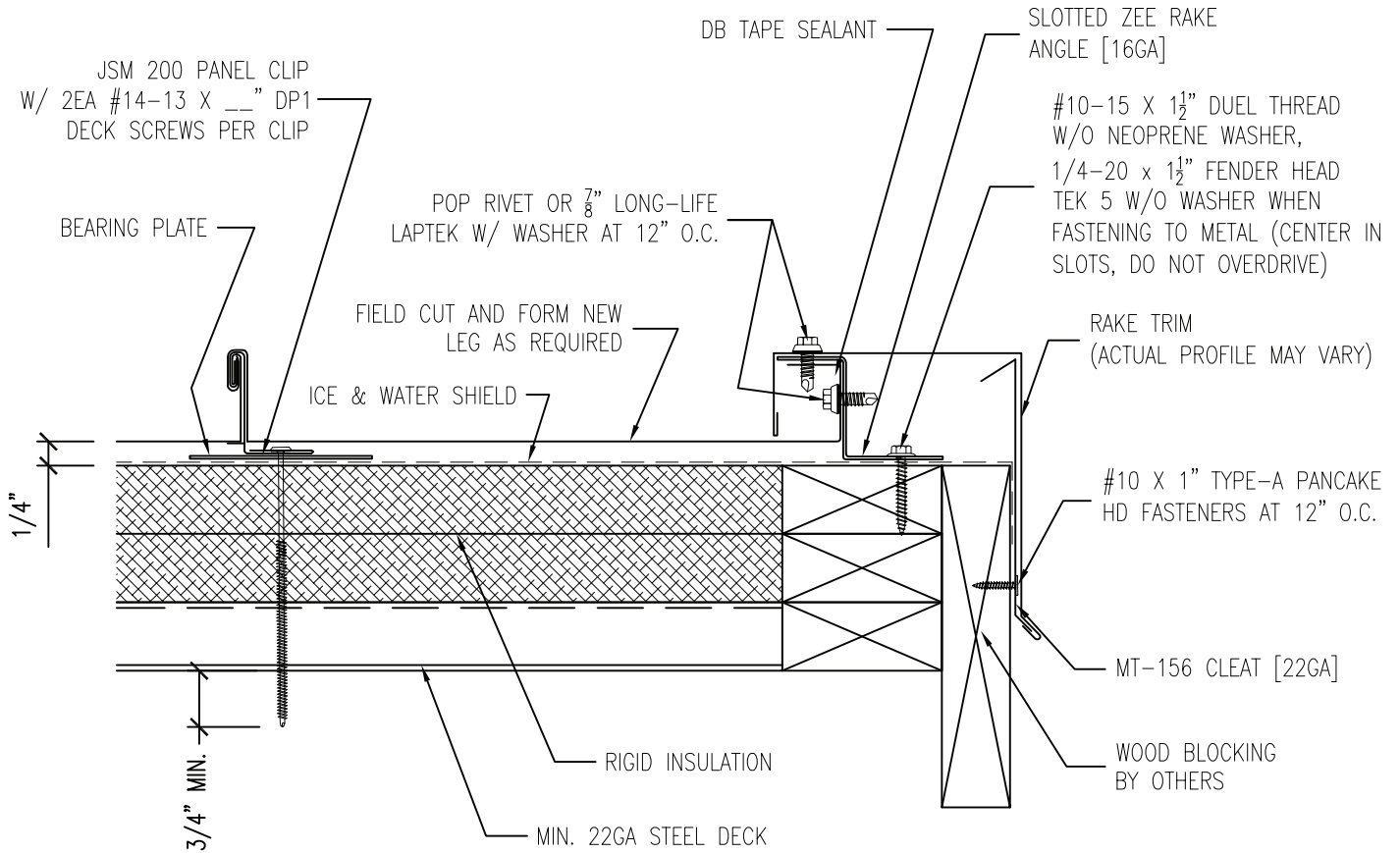
(800) 423-1105

PANEL:
JSM 200 PANEL ROOF PANEL

DATE:
04/20/11

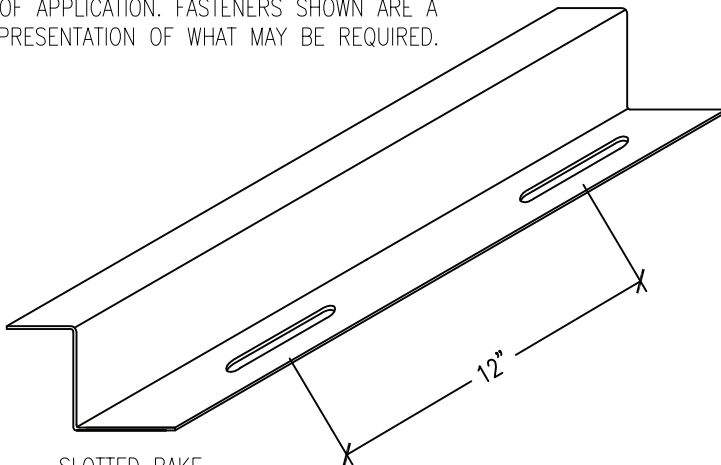
DETAIL:
FLOATING RAKE-OVER METAL DECK

DET.#
FR-200-01-M

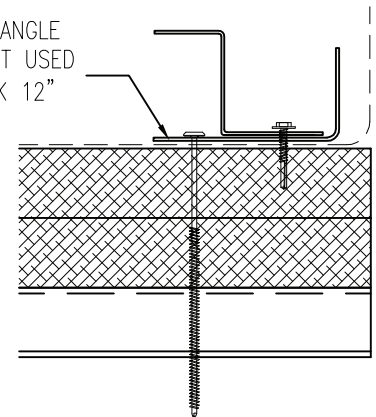


NOTE: FASTENERS SHOWN IN THIS DETAIL MAY NOT BE THE FASTENER USED FOR YOUR PROJECT. BE SURE TO USE FASTENERS SPECIFIC FOR YOUR ROOF APPLICATION. FASTENERS SHOWN ARE A REPRESENTATION OF WHAT MAY BE REQUIRED.

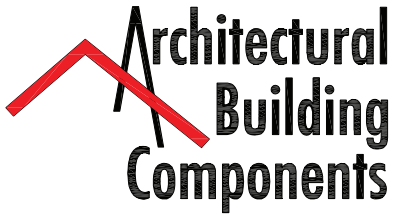
USE MT-88 BACK UP ANGLE WHEN BLOCKING IS NOT USED FASTEN TO STEEL DECK 12" O.C. MAX.



SLOTTED RAKE ANGLE [16GA]



-ARCHITECTURAL BUILDING COMPONENTS MUST FURNISH SLOTTED RAKE ANGLE ON ALL PROJECTS INVOLVING A WEATHER-TIGHTNESS WARRANTY



www.archmetalroof.com

(800) 423-1105

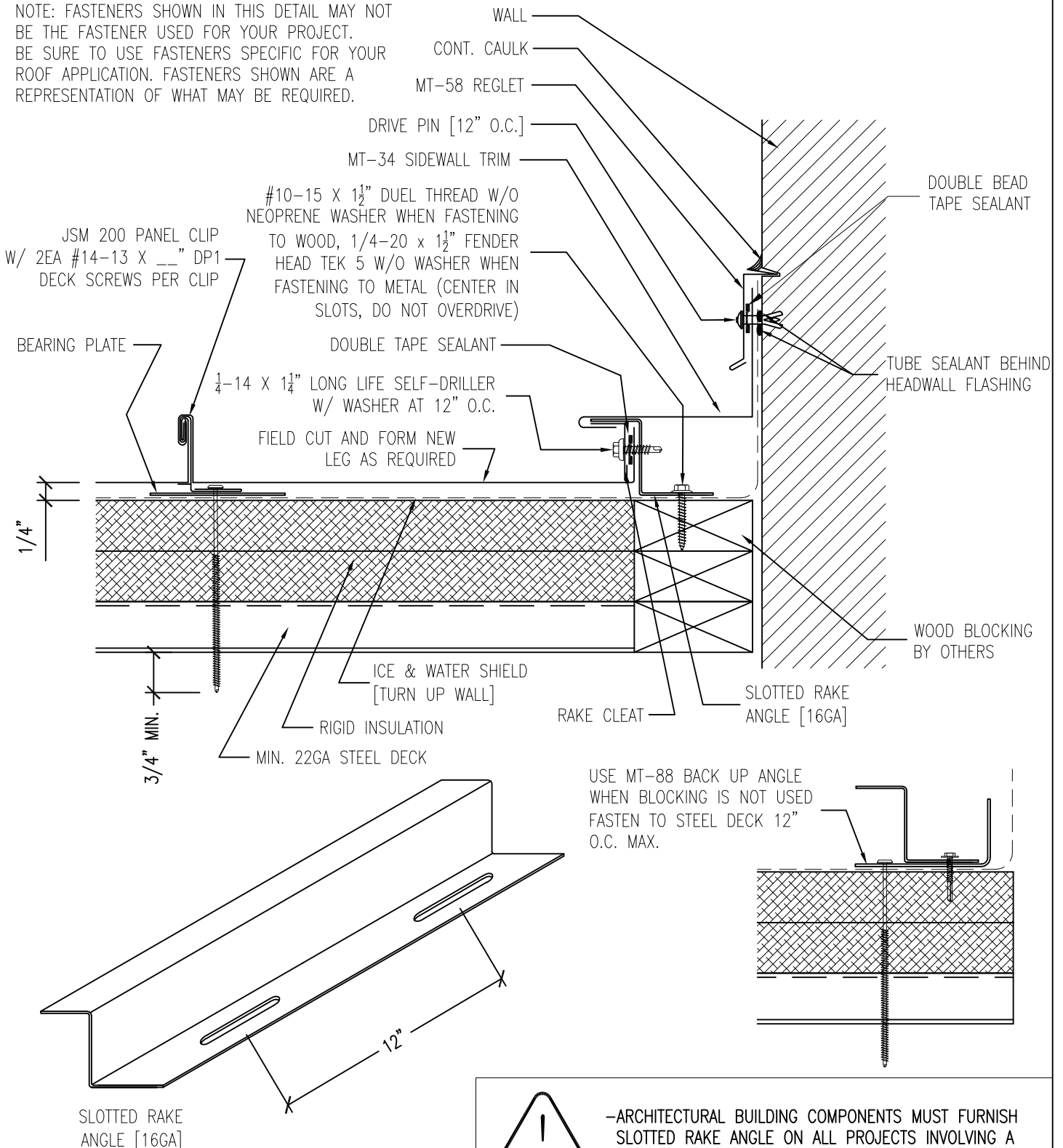
PANEL: JSM 200 PANEL ROOF PANEL

DATE: 04/20/11

DETAIL: FLOATING RAKE WALL W/ REGLET OVER METAL DECK

DET.# FRW-200-01-M

NOTE: FASTENERS SHOWN IN THIS DETAIL MAY NOT BE THE FASTENER USED FOR YOUR PROJECT. BE SURE TO USE FASTENERS SPECIFIC FOR YOUR ROOF APPLICATION. FASTENERS SHOWN ARE A REPRESENTATION OF WHAT MAY BE REQUIRED.



-ARCHITECTURAL BUILDING COMPONENTS MUST FURNISH SLOTTED RAKE ANGLE ON ALL PROJECTS INVOLVING A WEATHER-TIGHTNESS WARRANTY