

www.archmetalroof.com

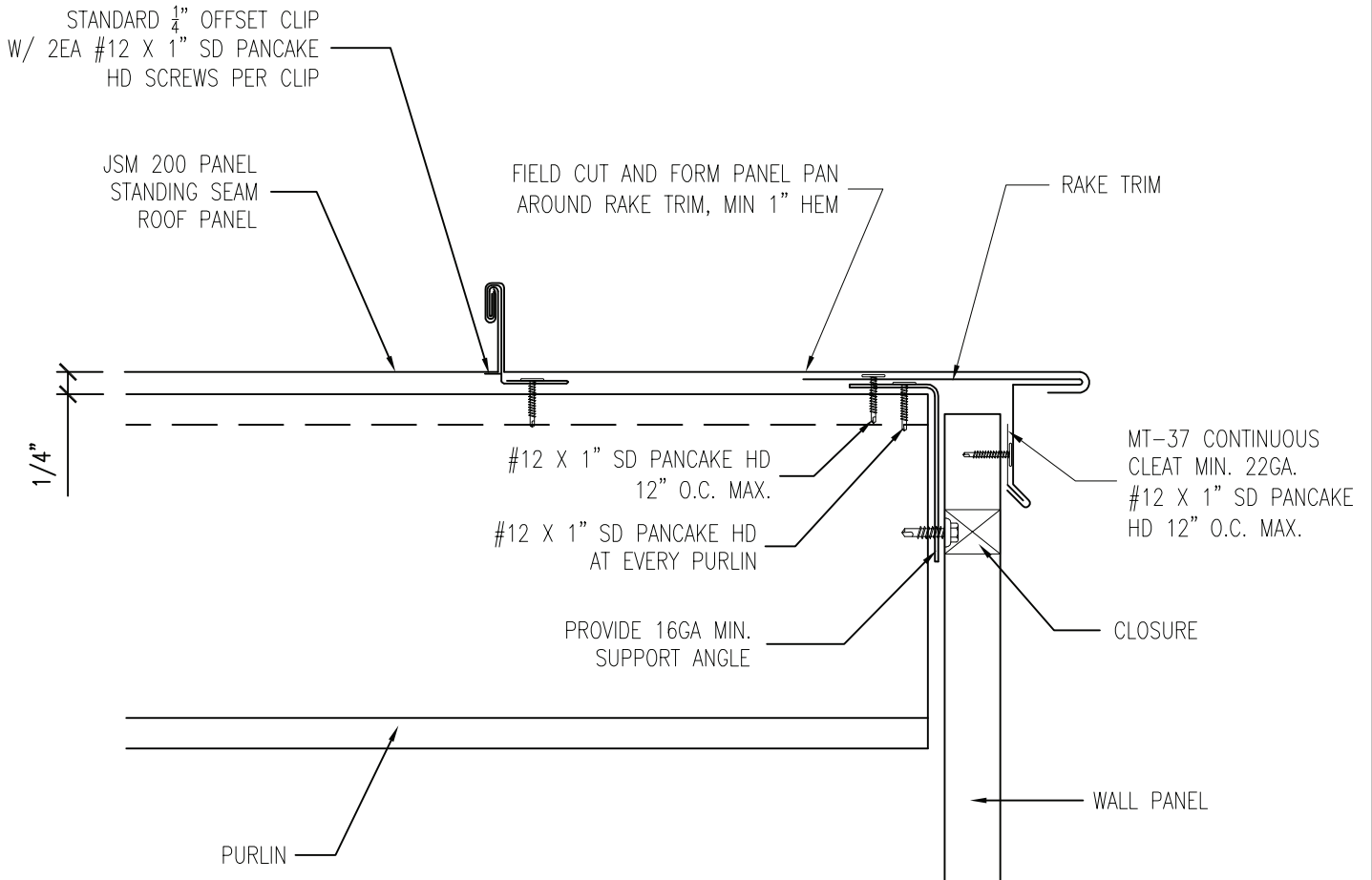
(800) 423-1105

PANEL: JSM 200 PANEL ROOF PANEL

DATE: 04/20/11

DETAIL: ALTERNATE RAKE OVER PURLINS

DET.# AR-200-01-P



NOTE: FASTENERS SHOWN IN THIS DETAIL MAY NOT BE THE FASTENER USED FOR YOUR PROJECT. BE SURE TO USE FASTENERS SPECIFIC FOR YOUR ROOF APPLICATION. FASTENERS SHOWN ARE A REPRESENTATION OF WHAT MAY BE REQUIRED.

-DO NOT USE BATT INSULATION WITH STANDARD CLIP!!!



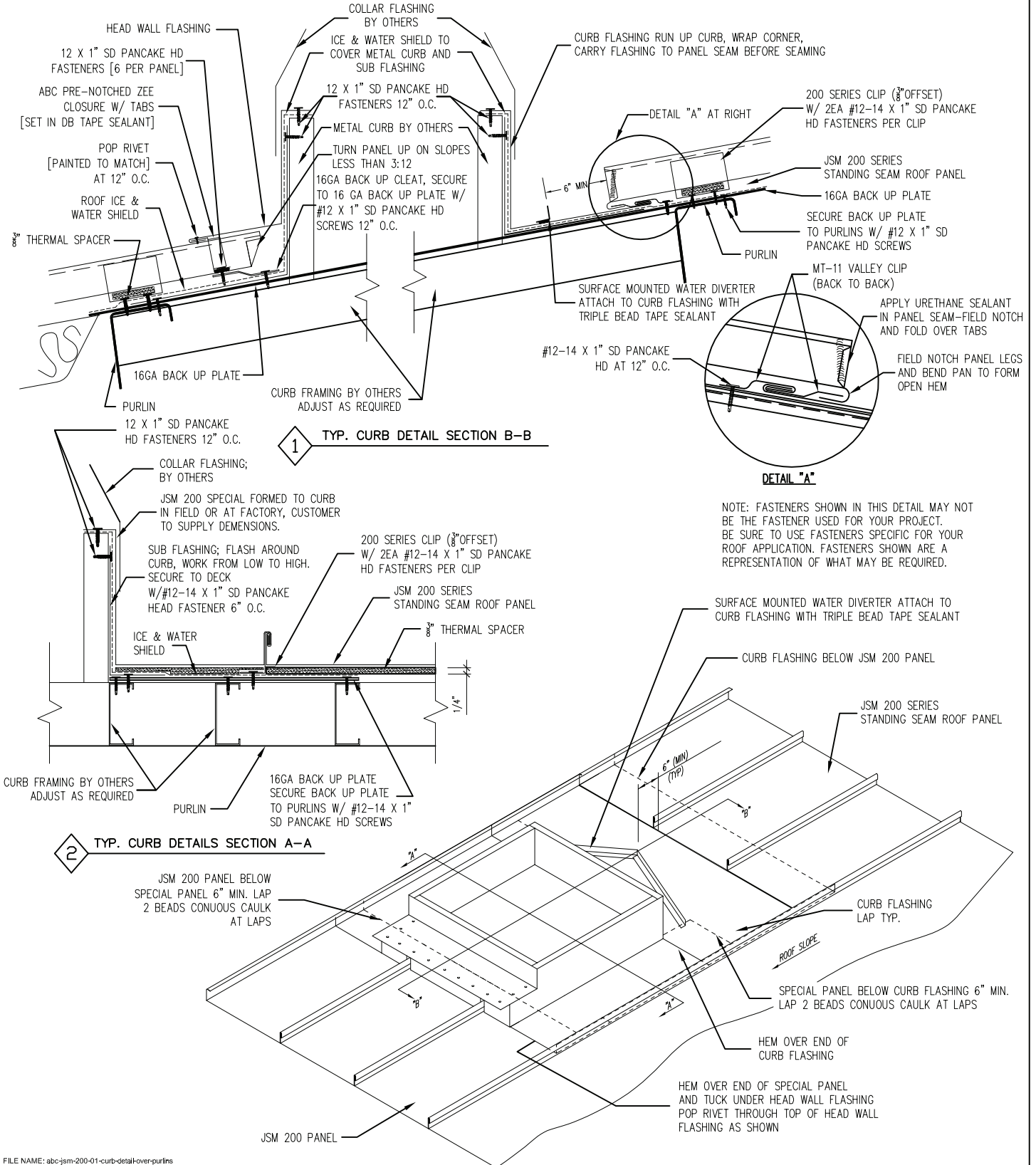
ARCHITECTURAL BUILDING COMPONENTS WILL ALLOW THIS DETAIL WHEN INVOLVING A WEATHER-TIGHTNESS WARRANTY (ONLY WHEN THE WIND LOAD IS 90 MPH OR LESS, IF WIND LOAD EXCEEDS 90 MPH A.B.C. REQUIRES THE USE OF THE SLOTTED RAKE ANGLE)

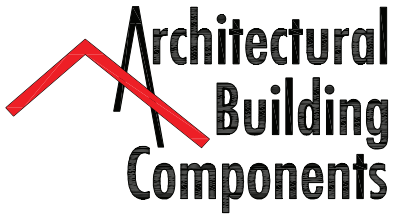
PANEL:
JSM 200 PANEL ROOF PANEL

DATE:
04/20/11

DETAIL:
CURB DETAIL OVER PURLINS

DET.#
CD-200-01-P





www.archmetalroof.com

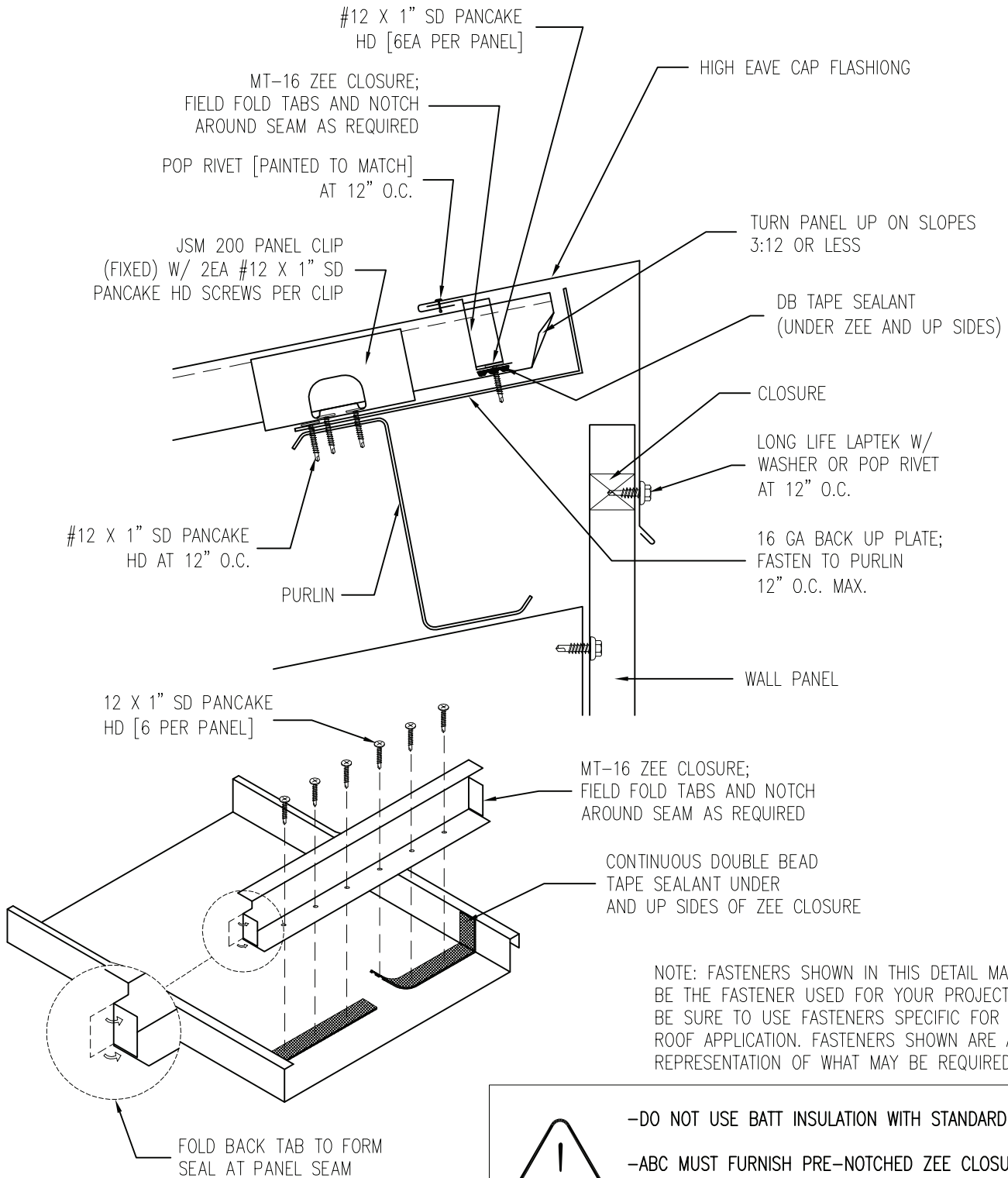
(800) 423-1105

PANEL: JSM 200 PANEL ROOF PANEL

DATE: 04/20/11

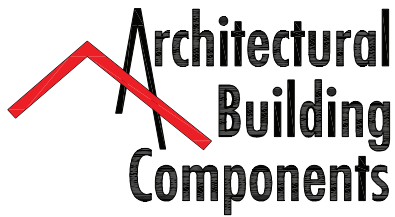
DETAIL: FIXED HIGH EAVE OVER PURLINS

DET.# FHE-200-01-P



-DO NOT USE BATT INSULATION WITH STANDARD CLIP!!!

-ABC MUST FURNISH PRE-NOTCHED ZEE CLOSURES & BACK UP PLATES ON ALL PROJECTS INVOLVING A WEATHER-TIGHTNESS WARRANTY!!!



www.archmetalroof.com

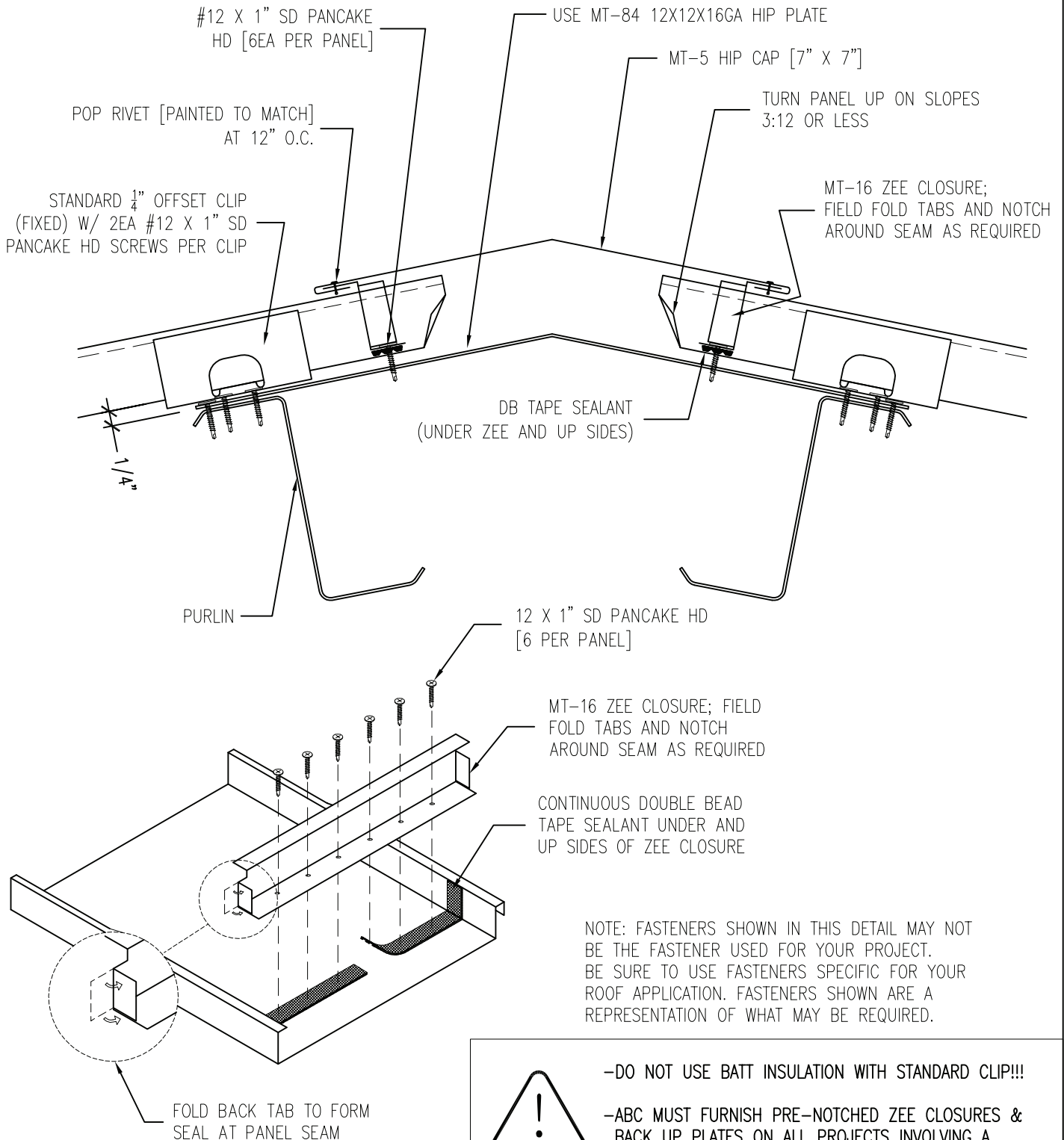
(800) 423-1105

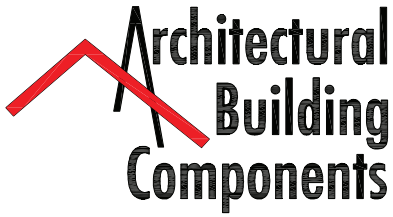
PANEL: JSM 200 PANEL ROOF PANEL

DATE: 04/20/11

DETAIL: FIXED HIP OVER PURLINS

DET.# FH-200-01-P





www.archmetalroof.com

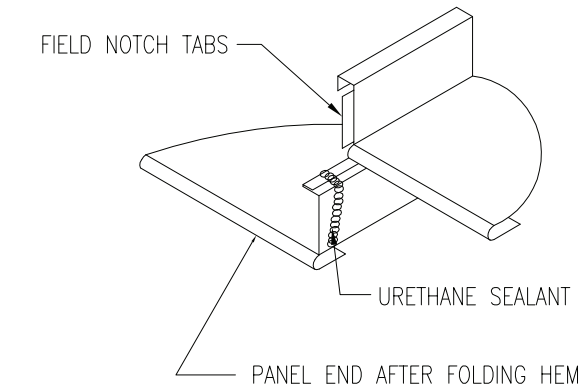
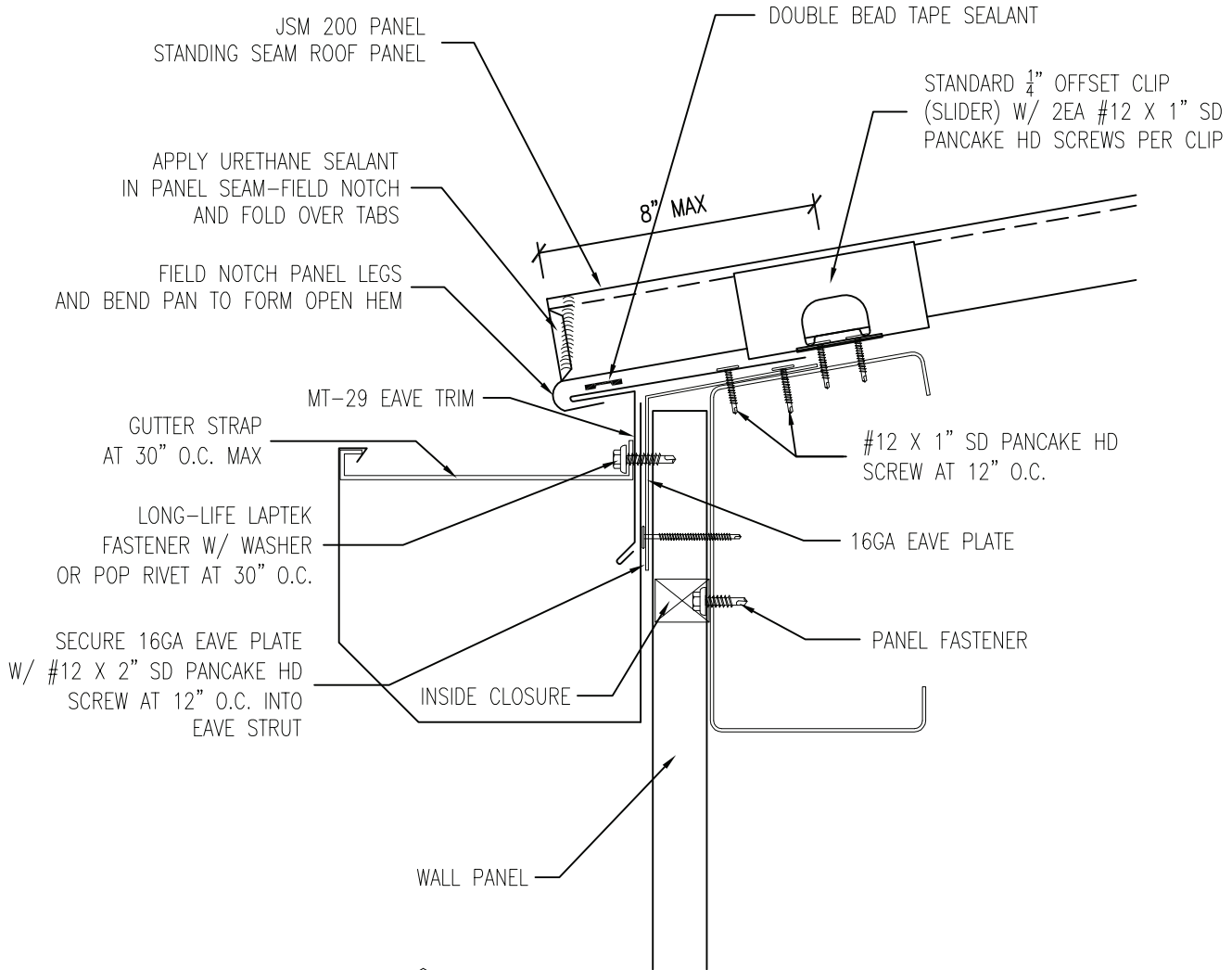
(800) 423-1105

PANEL:
JSM 200 PANEL ROOF PANEL

DATE:
04/20/11

DETAIL:
FLOATING EAVE OVER PURLINS W/ GUTTER

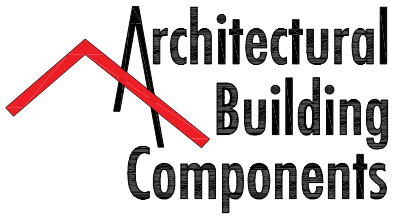
DET.#
FE-200-01-P



NOTE: FASTENERS SHOWN IN THIS DETAIL MAY NOT BE THE FASTENER USED FOR YOUR PROJECT. BE SURE TO USE FASTENERS SPECIFIC FOR YOUR ROOF APPLICATION. FASTENERS SHOWN ARE A REPRESENTATION OF WHAT MAY BE REQUIRED.



- DO NOT USE BATT INSULATION WITH STANDARD CLIP!!!
- DO NOT USE THIS DETAIL ON SLOPES LESS THAN 2:12



www.archmetalroof.com

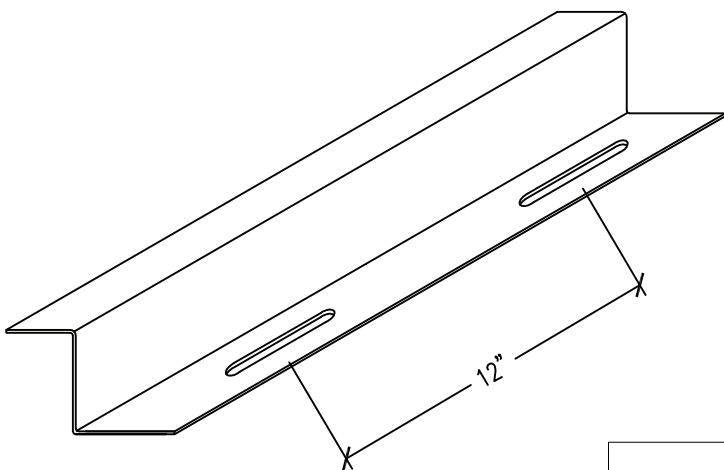
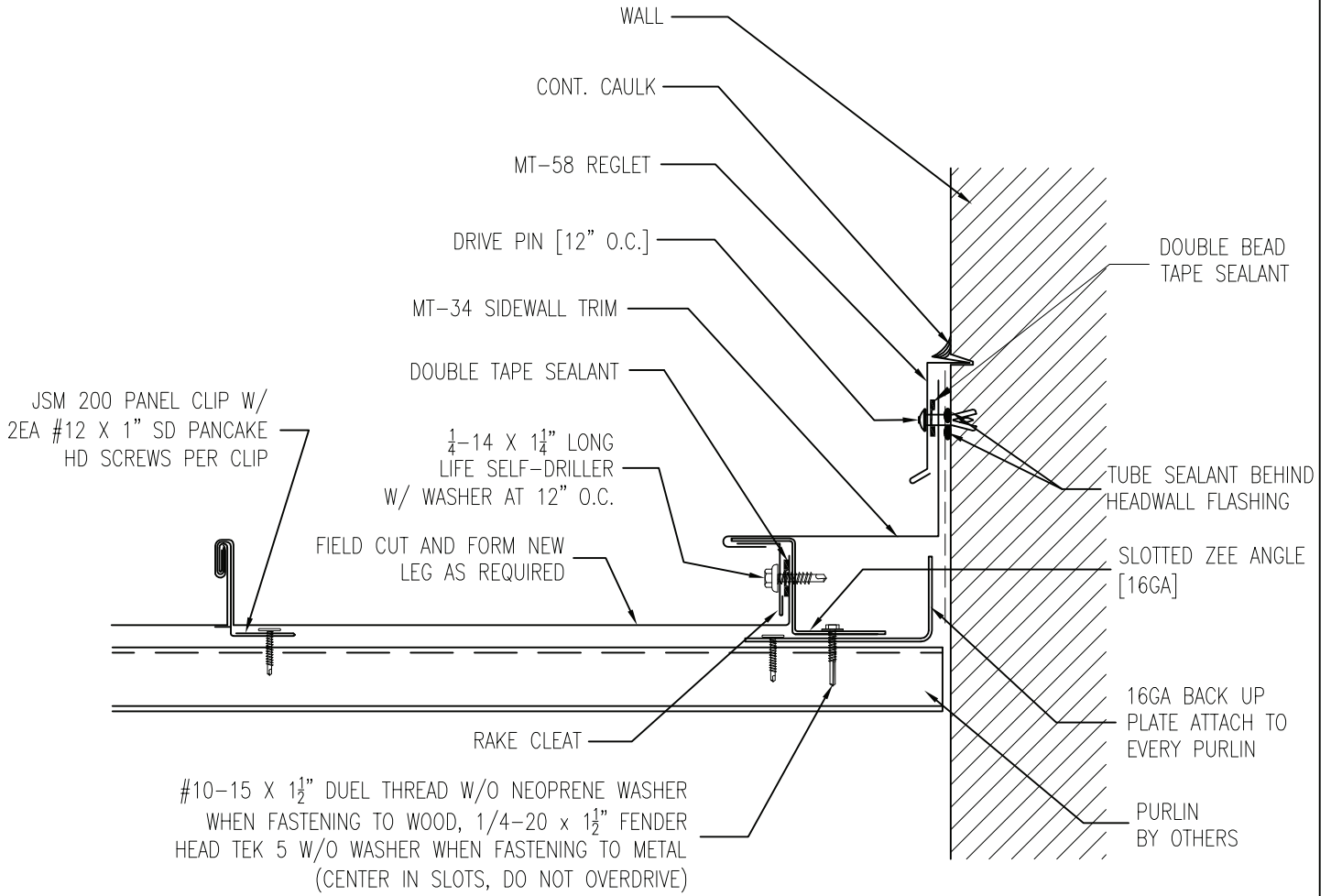
(800) 423-1105

PANEL: JSM 200 PANEL ROOF PANEL

DATE: 04/20/11

DETAIL: FLOATING RAKE WALL OVER PURLINS

DET.# FRW-200-01-P

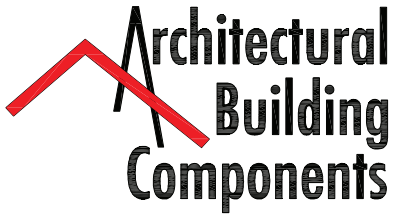


SLOTTED RAKE ANGLE [16GA]

NOTE: FASTENERS SHOWN IN THIS DETAIL MAY NOT BE THE FASTENER USED FOR YOUR PROJECT. BE SURE TO USE FASTENERS SPECIFIC FOR YOUR ROOF APPLICATION. FASTENERS SHOWN ARE A REPRESENTATION OF WHAT MAY BE REQUIRED.



-ARCHITECTURAL BUILDING COMPONENTS MUST FURNISH SLOTTED RAKE ANGLE ON ALL PROJECTS INVOLVING A WEATHER-TIGHTNESS WARRANTY



www.archmetalroof.com

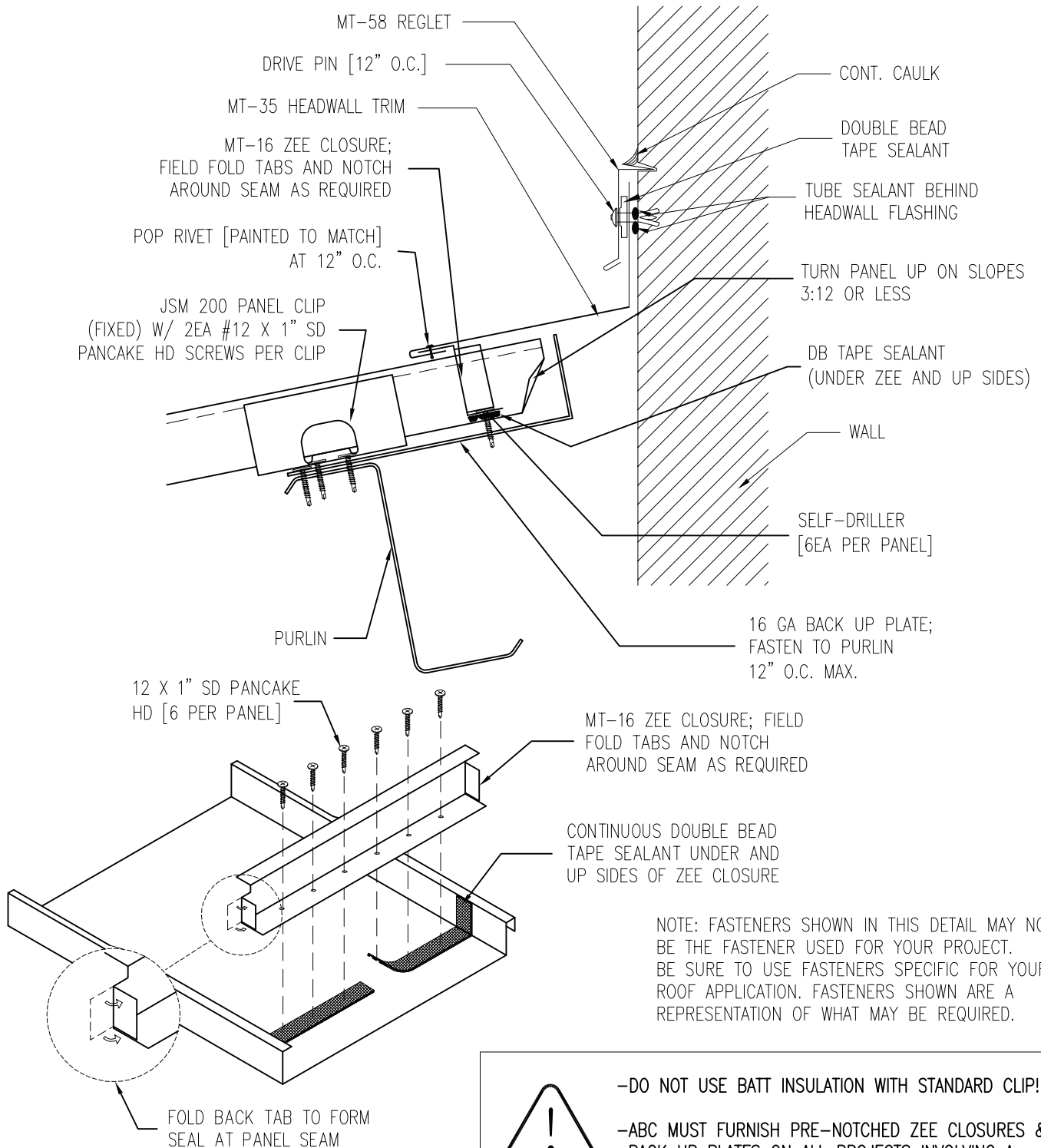
(800) 423-1105

PANEL: JSM 200 PANEL ROOF PANEL

DATE: 04/20/11

DETAIL: HEAD WALL OVER PURLINS

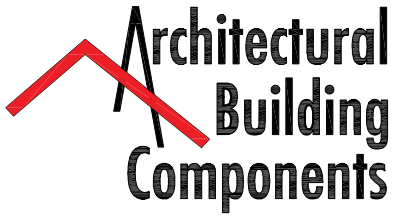
DET.# HW-200-01-P



NOTE: FASTENERS SHOWN IN THIS DETAIL MAY NOT BE THE FASTENER USED FOR YOUR PROJECT. BE SURE TO USE FASTENERS SPECIFIC FOR YOUR ROOF APPLICATION. FASTENERS SHOWN ARE A REPRESENTATION OF WHAT MAY BE REQUIRED.



-DO NOT USE BATT INSULATION WITH STANDARD CLIP!!
 -ABC MUST FURNISH PRE-NOTCHED ZEE CLOSURES & BACK UP PLATES ON ALL PROJECTS INVOLVING A WEATHER-TIGHTNESS WARRANTY!!!



www.archmetalroof.com

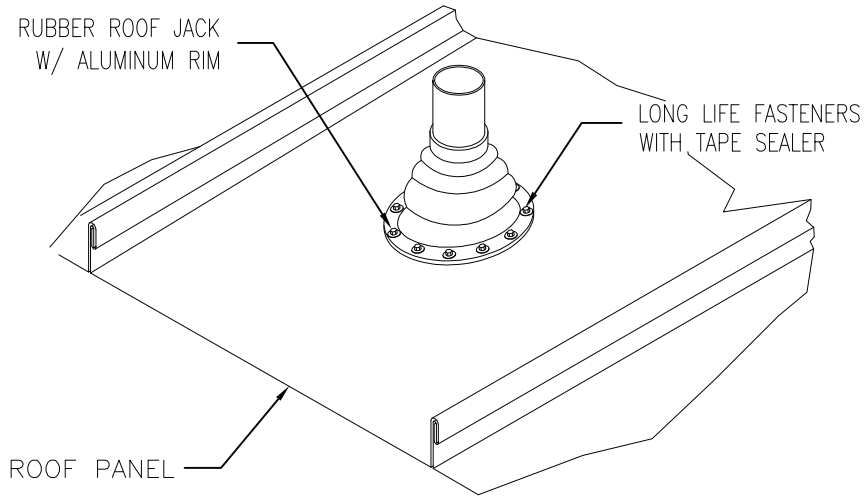
(800) 423-1105

PANEL: JSM 200 PANEL ROOF PANEL

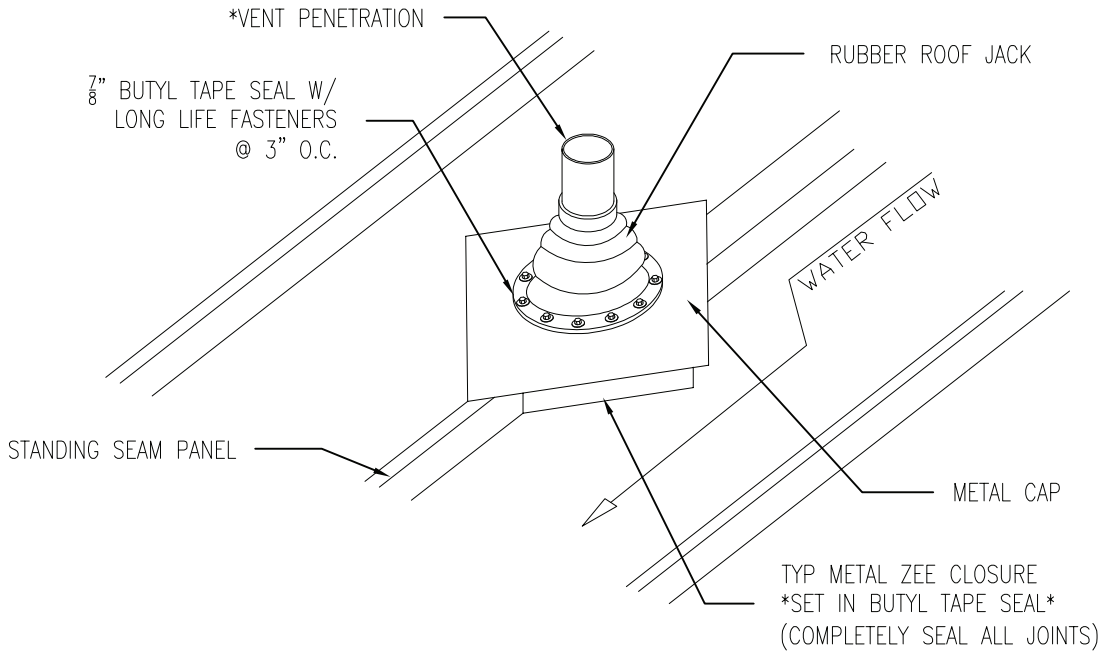
DATE: 04/20/11

DETAIL: PIPE PENETRATION OVER PURLINS

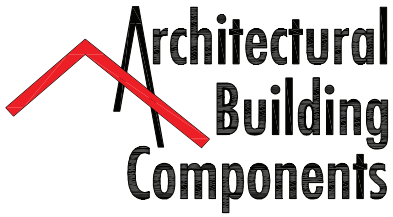
DET.# PP-200-01-P



TYP PIPE PENETRATION
WITH EPDM RUBBER BOOT



ALTERNATE PIPE DETAIL



www.archmetalroof.com

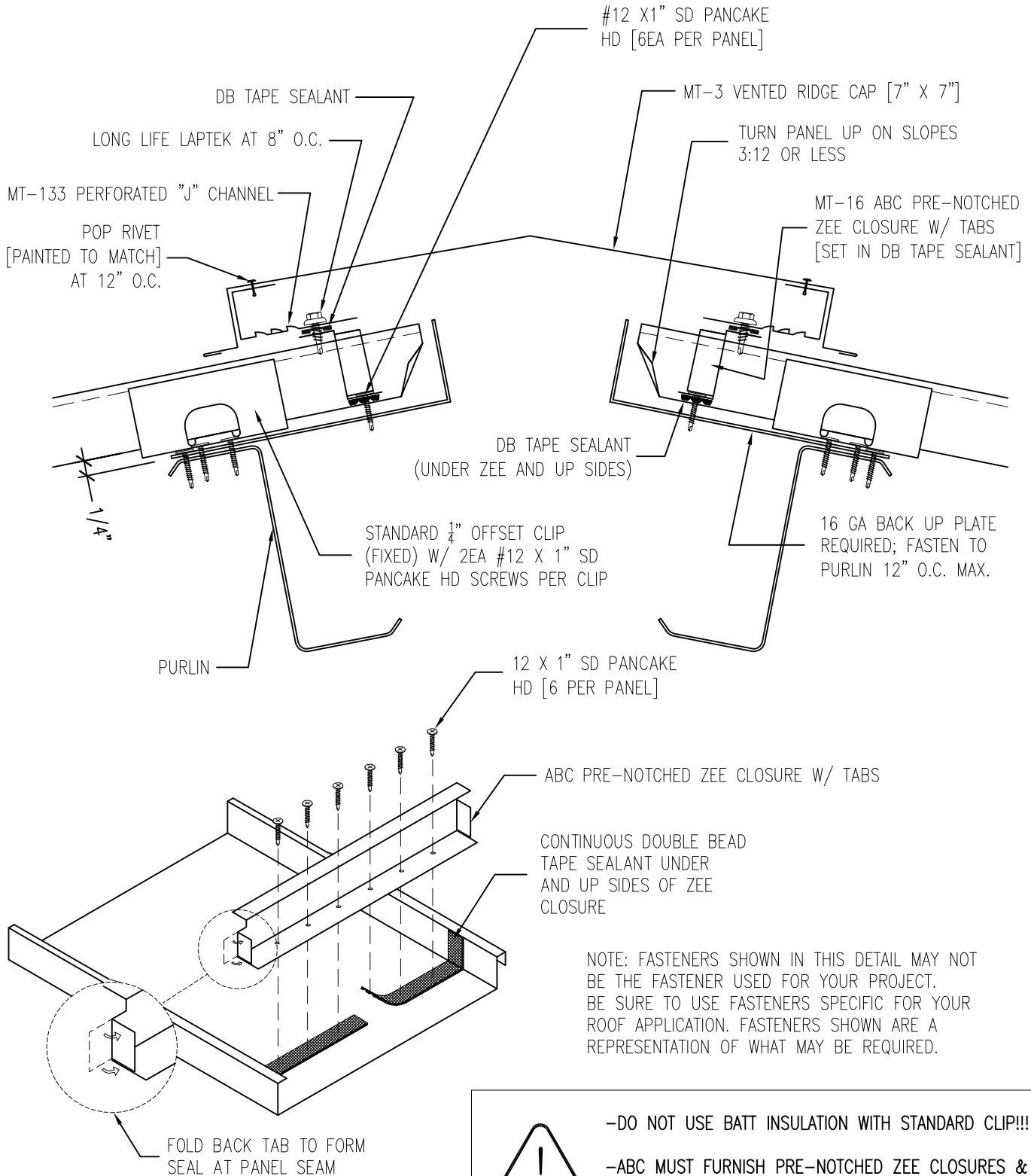
(800) 423-1105

PANEL: JSM 200 PANEL ROOF PANEL

DATE: 04/20/11

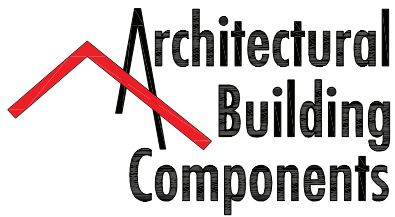
DETAIL: VENTED RIDGE OVER PURLINS

DET.# VR-200-01-P



-DO NOT USE BATT INSULATION WITH STANDARD CLIP!!!

-ABC MUST FURNISH PRE-NOTCHED ZEE CLOSURES & BACK UP PLATES ON ALL PROJECTS INVOLVING A WEATHER-TIGHTNESS WARRANTY!!!



www.archmetalroof.com

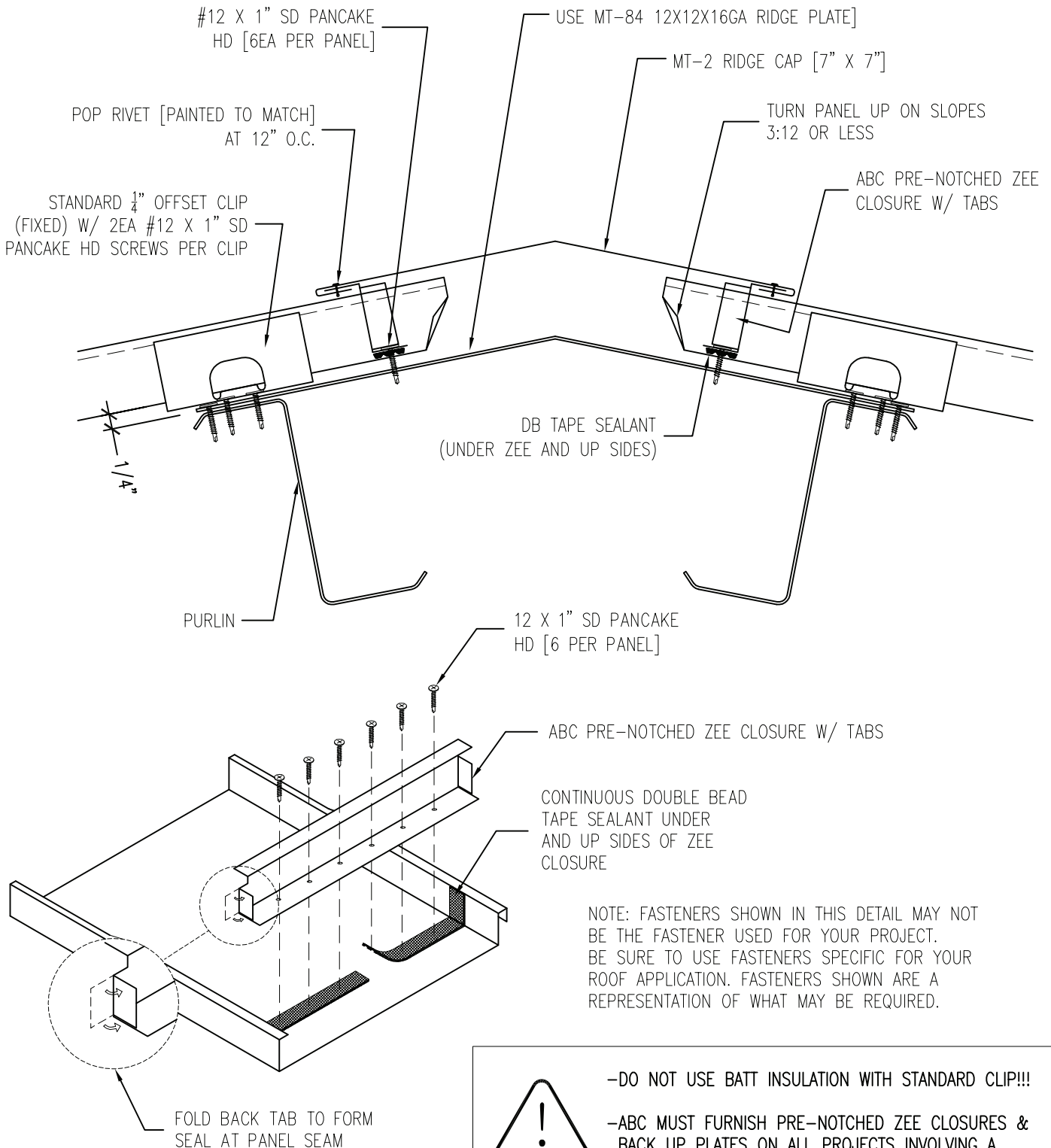
(800) 423-1105

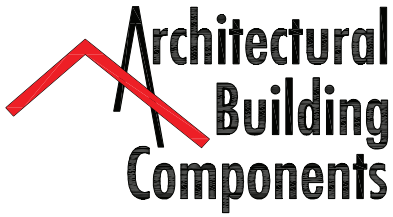
PANEL: JSM 200 PANEL ROOF PANEL

DATE: 04/20/11

DETAIL: FIXED RIDGE OVER PURLINS

DET.# FR-200-02-P





www.archmetalroof.com

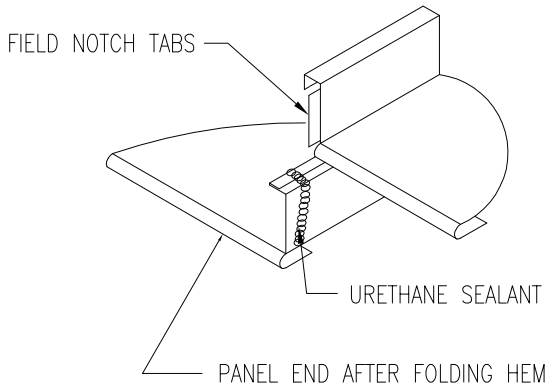
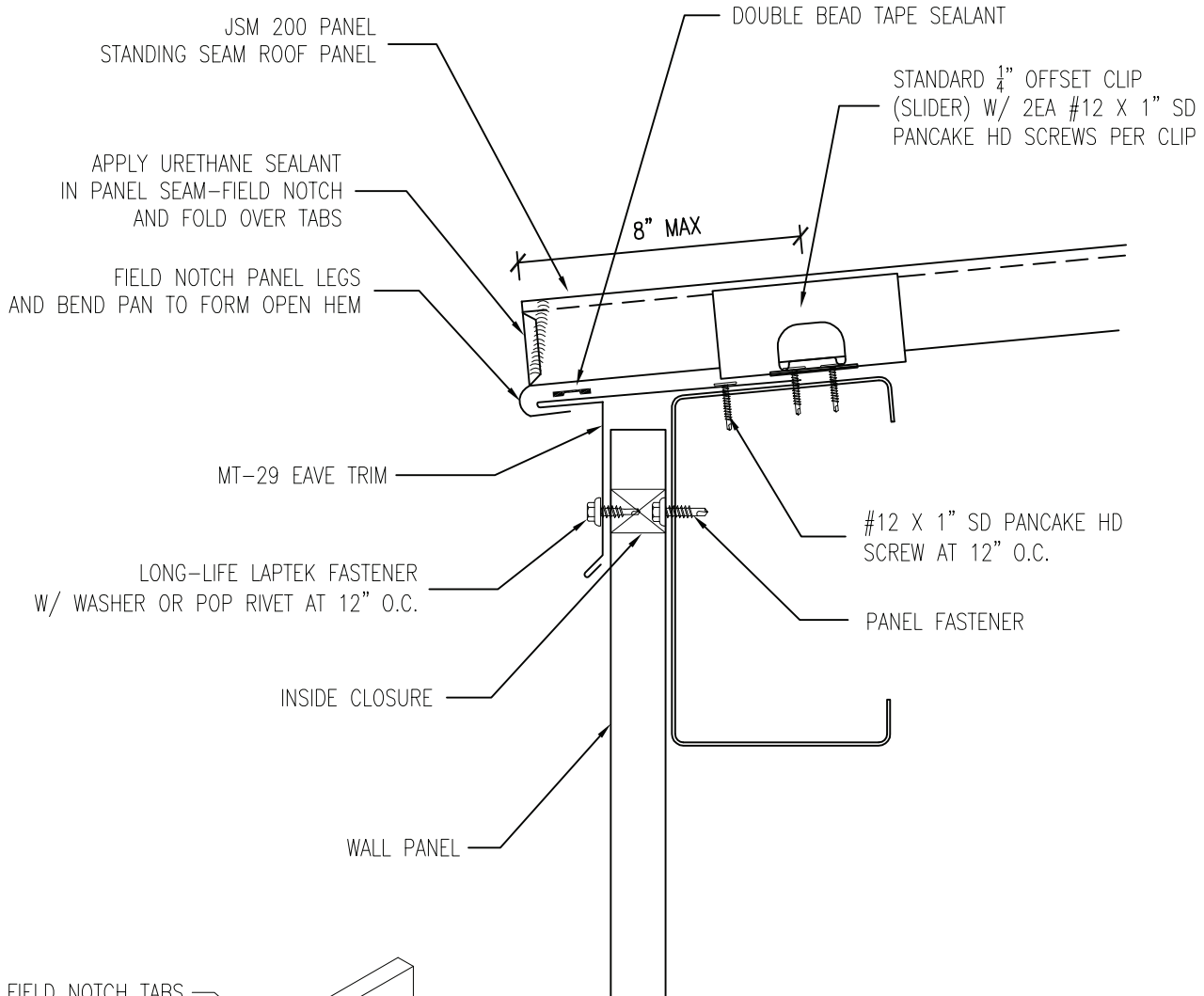
(800) 423-1105

PANEL: JSM 200 PANEL ROOF PANEL

DETAIL: FLOATING EAVE OVER PURLINS

DATE: 04/20/11

DET.# FE-200-02-P

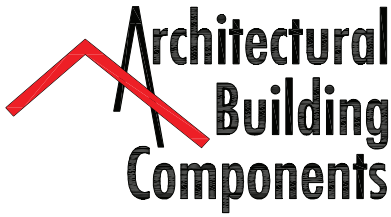


NOTE: FASTENERS SHOWN IN THIS DETAIL MAY NOT BE THE FASTENER USED FOR YOUR PROJECT. BE SURE TO USE FASTENERS SPECIFIC FOR YOUR ROOF APPLICATION. FASTENERS SHOWN ARE A REPRESENTATION OF WHAT MAY BE REQUIRED.



-DO NOT USE BATT INSULATION WITH STANDARD CLIP!!! WHEN BATT INSULATION IS NEEDED THE CLIP WILL BE EITHER A 3/8" OFFSET CLIP OR A 1" OFFSET CLIP

-DO NOT USE THIS DETAIL ON SLOPES LESS THAN 2:12



www.archmetalroof.com

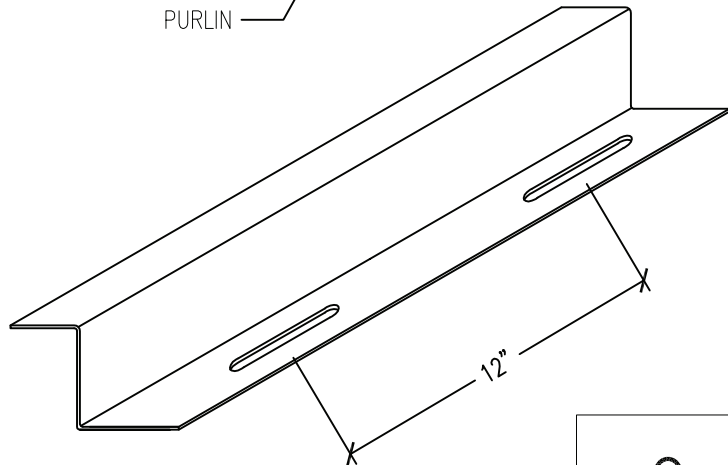
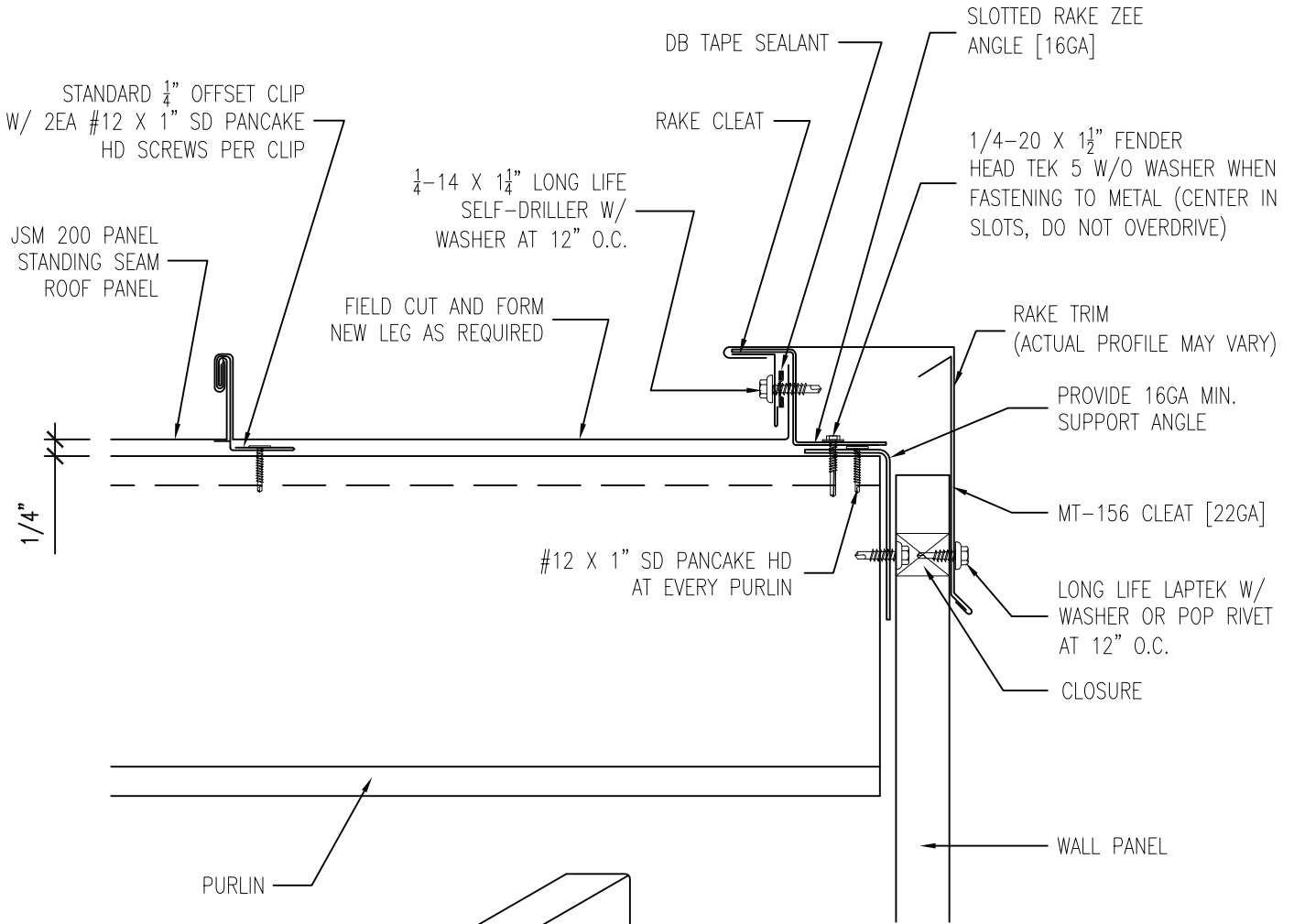
(800) 423-1105

PANEL: JSM 200 PANEL ROOF PANEL

DATE: 04/20/11

DETAIL: FLOATING RAKE OVER PURLINS

DET.# FR-200-02-P



SLOTTED RAKE ANGLE [16GA]

NOTE: FASTENERS SHOWN IN THIS DETAIL MAY NOT BE THE FASTENER USED FOR YOUR PROJECT. BE SURE TO USE FASTENERS SPECIFIC FOR YOUR ROOF APPLICATION. FASTENERS SHOWN ARE A REPRESENTATION OF WHAT MAY BE REQUIRED.



-DO NOT USE BATT INSULATION WITH STANDARD CLIP!!!

-ARCHITECTURAL BUILDING COMPONENTS MUST FURNISH SLOTTED RAKE ANGLE & BACK UP PLATE (IF REQ'D.) ON ALL PROJECTS INVOLVING A WEATHER-TIGHTNESS WARRANTY